



SCAN HERE  
for the  
digital leaflet



# HEBAT RAYA CERIA BERSAMA

8 March 2024 – 30 April 2024



## Rebate

Get Touch 'n Go eWallet credits  
or S PAY Global Loyalty Rewards  
Voucher up to RM2,500.



## Mix & Match

Enjoy extra rebate up to RM400.

\*Terms & conditions apply. Images are for illustration purposes only and may differ from actual products.

# HEBAT RAYA CERIA BERSAMA!



Upgrade your home and embrace the festive cheer with exclusive discounts and unbeatable offers.

## Rebate

Get Touch 'n Go eWallet credits or S PAY Global Loyalty Rewards Voucher up to **RM2,500**.



## Mix & Match

Enjoy extra rebate up to RM400 when you pair and purchase any 2 or more LG products!

RM3,000 - RM4,999  
**RM150 REBATE**

RM5,000 - RM6,999  
**RM250 REBATE**

RM7,000 & above  
**RM400 REBATE**

**TV**

OLED | QNED | UHD

**Sound Bar**

**Laundry**

WashTower | Washer Dryer |  
Front Load | Top Load

**Dryer**

**Refrigerator**

InstaView | Side-by-Side |  
Multi Door | Top Freezer | Bottom Freezer

**Styler**

**Vacuum**

**Air Conditioner**

**Water Purifier**

**Air Purifier**

\*You are required to mix your product purchases from different product categories. Following the table above, to qualify for this extra rebate e.g. purchasing from the TV category and Dryer Category. Pairing products from the same group will not entitle you for this extra rebate. Total minimum spending to qualify for this extra rebate is RM3,000. Eligible products are as per listed in the leaflet. Applicable for all LG products (except LG PuriCare™ products under Direct Selling Scheme OR Rental Scheme) purchased from eligible retailers.

## How To Redeem

To redeem your rebate kindly follow the steps.

### Step 1

Purchase eligible  
LG Products



### Step 2

Scan this QR code or go to  
[https://www.lg.com/my/promotions  
lgrewards-hebat-rama-ceria-bersama-2024](https://www.lg.com/my/promotions/lgrewards-hebat-rama-ceria-bersama-2024)



### Step 3

Fill in the details & upload  
invoice for verification



# Enjoy Free 3 months subscription of Apple TV+\* when you purchase LG TV.

Just open the Apple TV app on your LG TV to redeem.



LG SMART TV |

\*For new subscribers only. Redemption period valid until 30 April 2024.

## LG OLED evo



### a9 AI processor 4K Gen6

LG's a9 Gen 6 AI Processor uses advanced technology to detect and sharpen people and things within the frame, while maximizing the field of depth for incredibly lifelike images.



### Brightness Booster Max\*

Enhancing the vividness of LG OLED SELF-LIT PIXELS, the Brightness Booster Max delivers up to 70% more luminance to produce bolder visuals with superior light efficiency.



### Infinite Contrast

With no backlight to dull their impact, SELF-LIT PIXELS achieve the deepest blacks for crisp contrast. Visuals are more defined, so you can make out subtle details your eyes usually miss.



### One Wall Design

A revolution in design, the LG OLED G3 sits flush against your wall with its ultra-thin frame and can be used to display art when it's off, with hyper-realistic texture and color.



### G3 Series

- SELF-LIT OLED 4K-Perfect black, infinite contrast
- a9 AI processor 4K Gen6
- Brightness Booster Max delivering up to 70% brighter picture\*
- One Wall Design – flush fit for virtually no gap against the wall.

\*Compared to non OLED evo models and based on the full white measurement.

77" OLED G3  
**RM28,999**  
 RM32,999 Save RM4,000



65" OLED G3  
**RM15,199**  
 RM17,999 Save RM2,800



\*Subscription fee will be imposed by respective service provider immediately upon expiry of free subscription period. Source – Omdia. Unit shipments, 2013-2023. Results are not an endorsement of LG Electronics. Any reliance on these results is at the third-party's own risk. Promotion valid while stocks last. MSRP is subject to change without prior notice. Please submit a completed redemption form to redeem your gift(s). Redemption is on a first-come, first-served basis. Images are for illustration purposes only and may differ from actual products. For continual products development, LG reserves the right to change specifications, availability and pricing without further notice. Terms and conditions apply.

# LG OLED evo



## C3 Series

- SELF-LIT OLED 4K-Perfect black, infinite contrast
- α9 AI processor 4K Gen6
- Brightness Booster delivering up to 20% brighter picture\*

\*Compared to non OLED evo models and based on the full white measurement.

83" OLED C3  
**RM25,199**  
 RM35,999 Save RM10,800



77" OLED C3  
**RM19,999**  
 RM29,999 Save RM10,000



65" OLED C3  
**RM10,999**  
 RM14,999 Save RM4,000



55" OLED C3  
**RM7,999**  
 RM10,999 Save RM3,000



# LG OLED



## A3 Series

- SELF-LIT OLED 4K-Perfect black, infinite contrast
- α7 AI processor 4K Gen6
- Eye Comfort



65" OLED A3  
**RM9,749**  
 RM11,999 Save RM2,250



55" OLED A3  
**RM7,199**  
 RM8,999 Save RM1,800



# LG QNED MiniLED



## QNED86 Series

- Quantum Dot NanoCell Technology
- Real 4K QNED MiniLED, 120Hz
- α7 AI Processor 4K Gen6



86" QNED86SRA  
**RM15,999**  
 RM20,999 Save RM5,000



# LG QNED

## QNED81 Series

- Quantum Dot NanoCell Technology
- Real 4K QNED, 120Hz
- α7 AI Processor 4K Gen6



86" QNED81SRA  
**RM12,899**  
 RM15,999 Save RM3,100



75" QNED81SRA  
**RM8,999**  
 RM12,999 Save RM4,000



## QNED75 Series

- Quantum Dot NanoCell Technology
- Real 4K QNED
- α5 AI Processor 4K Gen6



75" QNED75SRA  
**RM7,599**  
 RM10,399 Save RM2,800



65" QNED75SRA  
**RM4,299**  
 RM5,999 Save RM1,700



65" QNED81SRA  
**RM5,299**  
 RM8,099 Save RM2,800



55" QNED81SRA  
**RM4,299**  
 RM6,299 Save RM2,000



55" QNED75SRA  
**RM3,699**  
 RM4,999 Save RM1,500



# LG UHD AI ThinQ

## UR8050 Series

- 4K HDR10 Pro
- α7 AI Processor 4K Gen6
- ThinQ AI and WebOS



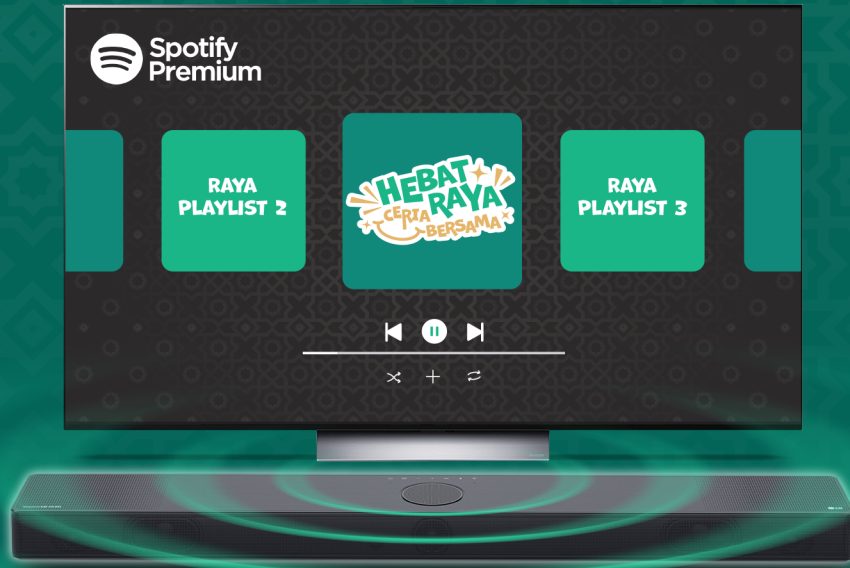
86" UR8050PSB  
**RM9,699**  
 RM11,999 Save RM2,300



75" UR8050PSB  
**RM5,799**  
 RM7,799 Save RM2,000



# Enjoy Free 3 months subscription of Spotify Premium\* when you purchase LG Sound Bar.



\*Selected models only. Limited to 400 units only. First come first served. While stocks last.

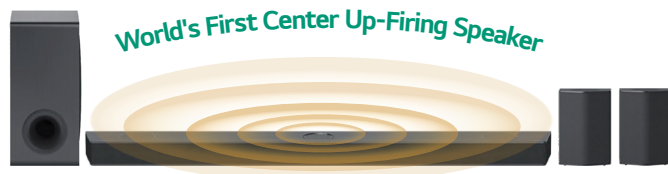
## LG Sound Bar



- Meridian Technology, Dolby Atmos, DTS:X & IMAX ENHANCED
- Best Matching Sound Bar with LG TV
- Real 3D Surround Sound
- Triple Up-Firing Speaker



SC9S (3.1.3 ch)  
**RM3,999**  
 RM4,599 Save RM600



S95QR (9.1.5 ch)  
**RM3,999**  
 RM4,599 Save RM600



S90QY (5.1.3 ch)  
**RM3,099**  
 RM3,499 Save RM400



S80QY (3.1.3 ch)  
**RM2,799**  
 RM3,099 Save RM300



\*Subscription fee will be imposed by respective service provider immediately upon expiry of free subscription period. Promotion valid while stocks last. MSRP is subject to change without prior notice. Please submit a completed redemption form to redeem your gift(s). Redemption is on a first-come, first-served basis. Images are for illustration purposes only and may differ from actual products. For continual products development, LG reserves the right to change specifications, availability and pricing without further notice. Terms and conditions apply.

# Get FREE Handstick Vacuum, worth RM2,299\* when you purchase LG WashTower™.

\*Applicable to LG WashTower™ WT2116SHB only.

LG WashTower™ | LG WashTower™ | Objet Collection



## Built-in Intelligence

Forget about sorting or choosing cycles. The AI will customize wash motions and drying temperatures for a more advanced fabric care.



## Fast and Clean Wash

TurboWash™ 360 uses 3D Multi Spray for maximizing detergent activation and even spraying. Faster cycle time even with the same washing performance and fabric care.



## Sleek Design & Easily Accessible Control Panel

LG WashTower™ is designed as an integrated single body that fits well anywhere with a built-in look, making it easier than ever to create a laundry room that's stylish and aesthetically pleasing.

WT2116SHB (21/16kg)

RM12,899

RM14,999 Save RM2,100



RM200



**FREE**  
Handstick Vacuum\*

A9N-LITE, Worth RM2,299

\*Excluded for Harvey Norman outlets.

WT1410NHEG (14/10kg)

RM8,899

RM11,999 Save RM3,100



RM500

\*The Eligible Gift of A9N-LITE is excluded for Harvey Norman outlets for any purchase made from 22 March 2024–30 April 2024. Purchase of WashTower at Harvey Norman outlets are entitled for the Eligible Gift of RM1,000 Touch 'n Go eWallet Credit or S PAY GLOBAL Loyalty Reward Voucher. Promotion valid while stocks last. MSRP is subject to change without prior notice. Please submit a completed redemption form to redeem your gift(s). Redemption is on a first-come, first-served basis. Images are for illustration purposes only and may differ from actual products. For continual products development, LG reserves the right to change specifications, availability and pricing without further notice. Terms and conditions apply.

# LG Washer Dryer



- Inverter Direct Drive™
- Steam™
- TurboWash™

F2720RVTV (20/10kg)  
**RM5,999**  
 RM7,999 Save RM2,000



- AI DD™
- Steam™
- TurboWash™

F2515RTGB (15/8kg)  
**RM4,399**  
 RM5,699 Save RM1,300



- AI DD™
- Steam+™
- TurboWash™ 360
- eZDispense™

FV1413H2BA (13/ 8kg)  
**RM4,199**  
 RM5,499 Save RM1,300



- AI DD™
- Steam™
- TurboWash™ 360
- eZDispense™

FV1411H3BA (11/ 7kg)  
**RM3,999**  
 RM5,399 Save RM1,400



- AI DD™
- Steam™
- TurboWash™ 360

FV1410H3P (10/6kg)  
**RM3,349**  
 RM4,599 Save RM1,250

# LG Front Loader



- AI DD™
- Steam™
- TurboWash™

F2724SVRW (24kg)  
**RM5,399**  
 RM7,299 Save RM1,900



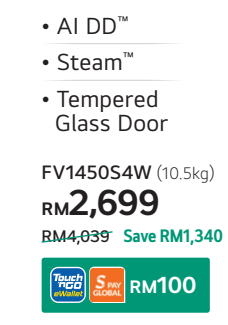
- AI DD™
- Steam™
- TurboWash™

F2515STGW (15kg)  
**RM3,599**  
 RM5,199 Save RM1,600



- AI DD™
- Steam™
- TurboWash™ 360

FV1412S3B (12kg)  
**RM3,099**  
 RM4,099 Save RM1,000



- AI DD™
- Steam™
- Tempered Glass Door

FV1450S4W (10.5kg)  
**RM2,699**  
 RM4,039 Save RM1,340



- AI DD™
- Steam™
- Tempered Glass Door

FV1409S4W (9kg)  
**RM2,299**  
 RM3,709 Save RM1,410



# LG Top Loader



- AI DD™
- TurboWash™ 3D
- Steam

TV2724SV9K (24kg)  
**RM3,499**  
 RM3,899 Save RM400



- AI DD™
- TurboWash™
- 6 Motion DD

TV2520SV7K (20kg)  
**RM2,749**  
 RM3,099 Save RM350



- AI DD™
- TurboWash™
- 6 Motion DD

TV2518SV7K (18kg)  
**RM2,499**  
 RM2,799 Save RM300



- AI DD™
- Turbo Drum
- 6 Motion DD

TV2517SV3B (17kg)  
**RM2,249**  
 RM2,499 Save RM300



# LG Dryer



- Dual Inverter Heat Pump™
- Allergy Care
- Dual Lint Filter

RH10VHP2B (10kg)  
**RM3,999**  
 RM5,399 Save RM1,400



- Dual Inverter Heat Pump™
- Allergy Care
- Dual Lint Filter

RH10VHP2W (10kg)  
**RM3,899**  
 RM5,199 Save RM1,300



- Inverter Direct Drive™
- TurboWash™ 3D
- Full stainless drum and filter

TH2113DSAK (13kg)  
**RM2,099**  
 RM2,729 Save RM630

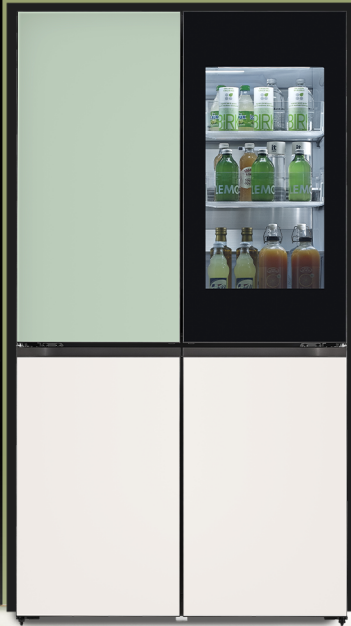


- Smart Inverter
- Turbo Drum
- Smart Diagnosis

T2516VSAJ (16.5kg)  
**RM1,999**  
 RM2,849 Save RM850

### Compatible Front Loader:

- F2724SVRW.ABWREML • F2515STGW.ABWREML • FV1412S3B.ABLREML
- FV1450S4W.ABWREML • FV1409S4W.ABWREML



GR-A24FQ5MB (617L)  
**RM 9,199**  
 RM10,399 Save RM1,200

**RM300**



### Knock Twice, See Inside

A sleek mirrored glass panel that illuminates with just two knocks. Creating an easy access to check up on your favorite foods.



### DoorCooling+™

Door Cooling+™ uses strategically placed air vents to help cool your items on the door shelf quickly.



### Aesthetic Color Panel

A combination of soft colors, expertly designed to provide a subtle finishing touch to your interior and saturates your kitchen space.



### Hygiene FRESH+™

Assists in removing bacteria up to 99.999%\* while also minimizing any bad odors in the refrigerator.

\*Bacteria: Staphylococcus aureus, Escherichia coli, Listeria monocytogenes, Klebsiella pneumoniae.



- UVnano Self-Cleaning Water Dispenser
- Door Cooling+™
- Hygiene FRESH+™

GC-X257CQES (635L)   
**RM 8,799**  
 RM15,999 Save RM7,200

**RM300**



- UVnano Self-Cleaning Water Dispenser
- Door Cooling+™
- Hygiene FRESH+™

GC-X257CSES (635L)   
**RM 7,599**  
 RM11,499 Save RM3,900

**RM300**



- Door Cooling+™
- Hygiene FRESH+™
- FRESHBalancer™

GC-V257CQFW (655L)  
**RM 5,999**  
 RM9,199 Save RM3,200

**RM200**

## LG Freezer™ | Objet Collection



### Multi Air Flow

Multiple cooling air vents distribute and circulate cool air to every corner of the refrigerator, ensuring that each and every food item is properly cooled.



### Express Freeze

Conveniently freeze items like seafood, meat, and other perishables in a shorter amount of time, to preserve your food's quality and freshness for longer periods.



### Frost Free

LG's frost-free cooling system prevents frost build-up over time, saving you the hassle of manual defrosting.



GC-B414FGQF (324L)  
**RM 4,299**  
 RM4,999 Save RM700

**RM200**

GC-B411FGPF (386L)  
**RM 4,299**  
 RM4,999 Save RM700

**RM200**



## LG Fridge™ | Objet Collection



### Door Cooling+™

Door Cooling+™ uses strategically placed air vents to help cool your items on the door shelf quickly.



### LINEAR Cooling™

Limits temperature fluctuation within  $\pm 0.5^\circ\text{C}$ , maintaining initial freshness longer than a conventional cooling system.



### FRESHBalancer™

Maintains a suitable moisture level to keep fruits and vegetables fresh for longer.

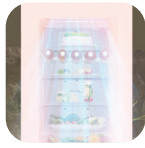


## LG Bottom Freezer™ | Objet Collection



### Cabinet Fit Design

With a flat door design and snug cabinet fit, enjoy a custom, built-in look with your refrigerator.



### Door Cooling+™

Door Cooling+™ uses strategically placed air vents to help cool your items on the door shelf quickly.



### LINEAR Cooling™

Limits temperature fluctuation within  $\pm 0.5^{\circ}\text{C}$ , maintaining initial freshness longer than a conventional cooling system.

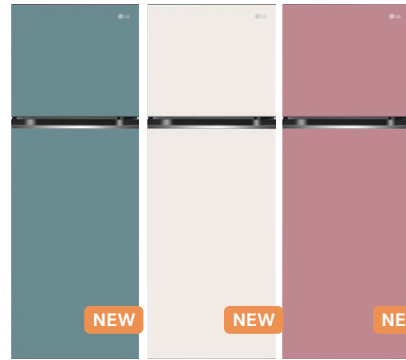
GC-B459QG9D (344L)

**RM4,199**

RM4,799 Save RM600



## LG Fridge™ | Objet Collection



- LINEAR Cooling™
- Door Cooling+™
- Smart Inverter

GN-B332PMGB (mint) (335L)  
GN-B332PBGB (beige) (335L)  
GN-B332PPGB (clay pink) (335L)

**RM2,099**

RM2,299 Save RM200



GN-B452PMFK (mint) (461L)  
GN-B452PBFK (beige) (461L)  
GN-B452PPFK (clay pink) (461L)

**RM2,799** **NEW**

RM3,039 Save RM240



## LG Side-by-Side



- LINEAR Cooling™
- Door Cooling+™
- Fresh 0 Zone

GC-M257CGFL (655L)

**RM5,699**

RM9,109 Save RM3,410



Door in Door



- UVnano Self-Cleaning Water Dispenser
- Door Cooling+™
- Hygiene FRESH+™

GC-L257CQEL (635L)

**RM5,299**

RM7,199 Save RM1,900



- Door Cooling+™
- Express Freeze
- Fresh 0 Zone

GC-B257SLVL (655L)

**RM4,299**

RM5,699 Save RM1,400



GC-B257JQYL (655L)

**RM3,999**

RM5,099 Save RM1,100



## LG Top Freezer



- LINEAR Cooling™
- Door Cooling+™
- Multi Air Flow

GR-H802HQHM (592L)

**RM3,599**

RM4,629 Save RM1,030



GN-H602HXHM (475L)

**RM2,799**

RM3,129 Save RM330



GN-C702SGGM (506L)

**RM3,199**

RM3,519 Save RM320



GN-C702HLCM (509L)

**RM2,899**

RM3,229 Save RM330



GN-C602HLCM (478L)

**RM2,699**

RM3,039 Save RM340

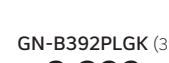


- Door Cooling+™
- Multi Air Flow
- Smart Diagnosis™

GN-B392PXBK (395L)

**RM2,399**

RM2,819 Save RM420



GN-B392PLGK (395L)

**RM2,299**

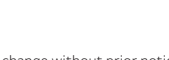
RM2,629 Save RM330



GN-B372PXBK (375L)

**RM2,319**

RM2,739 Save RM420



# LG CordZero™ All-in-One Tower



## Auto Empty

The bin empties automatically when you place the vacuum to the station, saving you time and the hassle of dust scattering all over the place.



## Dual PowerPack™

2 interchangeable lithium-ion batteries provide you with 120 minutes of uninterrupted cleaning experience (on normal mode with a nonmotorized nozzle.)



## Kompressor™

The LG Kompressor™ technology saves you time and effort by helping you utilize up to 2.4 times of dust bin capacity. Press down and compress dirt and dust collected in the bin.



## 2 in 1 Power Drive Mop™

With versatile Power Drive Mop™, you can save time and effort by vacuuming and mopping at the same time.



## Accessories Storage

All-in-One Tower stores nozzles and accessories charges batteries, and even auto-empties the dust bin, so you can keep your space clean and neat.



A9T-MAX (210W, Calming Green)

**RM4,299**

RM4,999 Save RM700



A9T-CORE (210W, Calming Beige)

**RM3,699**

RM4,499 Save RM800



# LG CordZero™



- Kompressor™
- Dual PowerPack™
- 5 Step Filtration System
- Power Drive™ Mop

A9K-MAX (200W, Full Black)

**RM2,899**

RM3,699 Save RM800



- Single PowerPack™
- 5 Step Filtration System
- Power Drive™ Mini

A9N-LITE (160W, Vintage Wine)

**RM1,799**

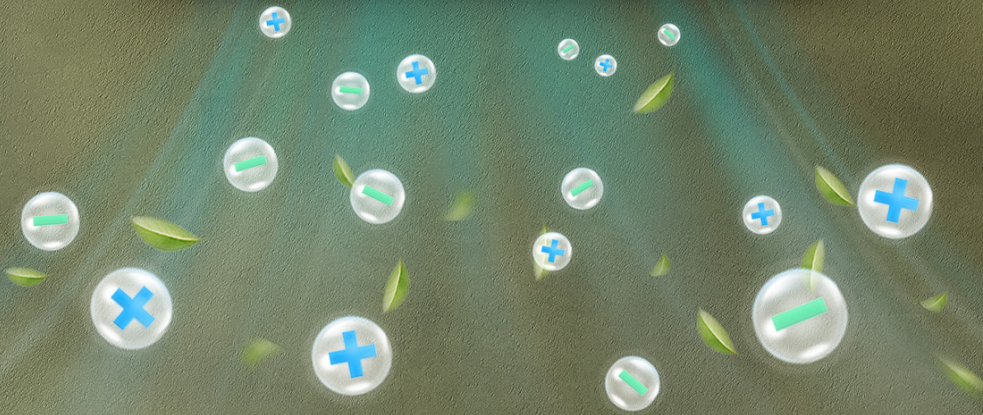
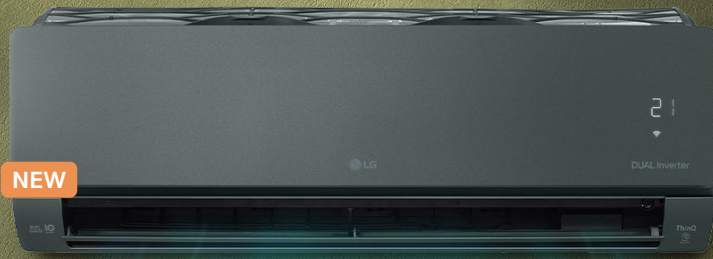
RM2,299 Save RM500



LG ARTCOOL™



LG ThinQ Plasmaster™ Ionizer<sup>++</sup>



### 70% Energy Saving & 40% Faster Cooling

Powered by DUAL Inverter Compressor™, it provides an impressive 70% increase in energy efficiency and delivers a 40% faster cooling performance, saving on electricity bills for quicker cooling comfort.



### Premium Sleek Design

The minimalist design of the air conditioner is characterized by the colors, clean lines, a sleek finish and a slim profile.



### Plasmaster™ Ionizer<sup>++</sup>

LG Plasmaster Ionizer<sup>++</sup> has more than 8 million ions at work to remove 99.9%\* adhering bacteria within 60 mins, leaving you with the purest air at every breath



### LG ThinQ

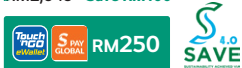
The LG ThinQ app enables you to switch on or off, control your air conditioner, and monitor your energy usage even when you are outside.

#### ArtCool Green Series

S3-Q09JATPA (1.0hp)

RM2,549 **NEW**

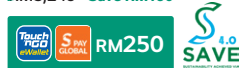
RM2,649 Save RM100



S3-Q12JATPA (1.5hp)

RM3,089 **NEW**

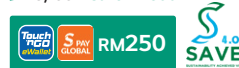
RM3,249 Save RM160



S3-Q18KLTPA (2.0hp)

RM4,809 **NEW**

RM5,199 Save RM390



S3-Q24K2TPA (2.5hp)

RM5,599 **NEW**

RM5,899 Save RM300



\*e-rebate program with SEDA Malaysia. Please refer to <https://www.seda.gov.my/saveprogram/> for more information. Promotion valid while stocks last. MSRP is subject to change without prior notice. Please submit a completed redemption form to redeem your gift(s). Redemption is on a first-come, first-served basis. Images are for illustration purposes only and may differ from actual products. For continual products development, LG reserves the right to change specifications, availability and pricing without further notice. Terms and conditions apply.

# LG ARTCOOL™



LG ThinQ Plasmaster™ Ionizer<sup>++</sup>

## ArtCool Mirror Series

- Dual Inverter
- Plasmaster™ Ionizer<sup>++</sup>
- ThinQ
- Mirror Surface Design



S3-Q09JARPA (1.0hp)

**RM2,549 NEW**

RM2,649 Save RM100



S3-Q12JARPA (1.5hp)

**RM3,089 NEW**

RM3,249 Save RM160



S3-Q18KL RPA (2.0hp)

**RM4,809 NEW**

RM5,199 Save RM390



S3-Q24K2RPA (2.5hp)

**RM5,599 NEW**

RM5,899 Save RM300



# LG DUALCOOL™



LG ThinQ Plasmaster™ Ionizer<sup>++</sup>



## Premium Series

- Dual Inverter
- Plasmaster™ Ionizer<sup>++</sup>
- ThinQ

S3-Q09JAPPA (1.0hp)

**RM2,269 NEW**

RM2,299 Save RM30



S3-Q12JAPPA (1.5hp)

**RM2,639 NEW**

RM2,799 Save RM160



S3-Q18KLPPA (2.0hp)

**RM4,109 NEW**

RM4,499 Save RM390



S3-Q24K2PPA (2.5hp)

**RM4,799 NEW**

RM5,099 Save RM300



S3-Q09JA2PA (1.0hp)

**RM2,269**

RM2,299 Save RM30



S3-Q12JA2PA (1.5hp)

**RM2,639**

RM2,799 Save RM160



S3-Q18KL2PA (2.0hp)

**RM4,109**

RM4,499 Save RM390



S3-Q24K22PA (2.5hp)

**RM4,799**

RM5,099 Save RM300



## Deluxe Series

- Dual Inverter
- Self Cleaning
- Comfort Air

S3-Q09JA3WA (1.0hp)

**RM1,919**

RM1,949 Save RM30



S3-Q12JA3WA (1.5hp)

**RM2,269**

RM2,299 Save RM30



S3-Q18KL3WA (2.0hp)

**RM3,749**

RM3,999 Save RM250



S3-Q24K23WA (2.5hp)

**RM4,269**

RM4,399 Save RM130



## Classic Series

- Dual Inverter
- Self Cleaning
- Jet Cool

S3-Q09WAPWL (1.0hp)

**RM1,599 NEW**

RM1,649 Save RM50



S3-Q12JAPWL (1.5hp)

**RM1,899 NEW**

RM1,999 Save RM100



S3-Q09WA5AB (1.0hp)

**RM1,649**

RM1,699 Save RM50



S3-Q12JA3AD (1.5hp)

**RM1,999**

RM2,099 Save RM100



## Lite Series

- Dual Sensing
- Fast Cooling
- Auto Swing



S3-C09HZCAA (1.0hp)

**RM1,199**

RM1,449 Save RM250

S3-C12HZCAA (1.5hp)

**RM1,449**

RM1,649 Save RM200

S3-C18HZCAA (2.0hp)

**RM2,249**

RM2,499 Save RM250



WD518AN + AS65GDPB0  
(Calming Beige, Clay Mint + Romantic Rose)  
Hot Ambient Cold

Rental  
Self-Service

RM113/month RM173/month

7 YEARS Self-Service 5 YEARS Self-Service



WD216AN + AS65GDPB0  
(Navy Blue + Romantic Rose)  
Hot Ambient

Rental  
Self-Service

RM103/month RM163/month

7 YEARS Self-Service 5 YEARS Self-Service

LG PuriCare | Objet Collection



Colors that Saturated Your Kitchen

Available in a range of color combinations, choose the water purifier that pairs perfectly with your interior style.



Tankless Technology

Eliminates the concern of microorganism formation, provides clean drinking water by using direct water filtration



4-Stage All Puri Filter System

Remove heavy metals and norovirus bacteria with inbuilt multi-stage filtration, improving your water's taste and quality.



WD518AN (Calming Beige, Clay Mint)  
Hot Ambient Cold

Outright

Self-Service Regular Visit

RM3,200 RM4,000

2 YEARS Self-Service 2 YEARS Regular Visit

Rental

Self-Service Regular Visit

Normal Price: RM65/month Normal Price: RM105/month  
RM60/month RM90/month

7 YEARS Self-Service 5 YEARS Self-Service 7 YEARS Regular Visit 5 YEARS Regular Visit

LG PuriCare™ Water Purifier

Self-Service Tankless Water Purifier

- Auto Sterilization • 4-Stage All Puri Filter System • Internal Stainless Steel Pipe



WD516AN (Silver, Navy Blue, White) Hot Ambient Cold

Outright

Self-Service Regular Visit

RM3,200 RM4,000

2 YEARS Self-Service 2 YEARS Regular Visit

Rental

Self-Service Regular Visit

Normal Price: RM65/month Normal Price: RM105/month  
RM60/month RM90/month

7 YEARS Self-Service 5 YEARS Self-Service 7 YEARS Regular Visit 5 YEARS Regular Visit



WD216AN (Navy Blue) Hot Ambient

Outright

Self-Service Regular Visit

RM2,800 RM3,600

2 YEARS Self-Service 2 YEARS Regular Visit

Rental

Self-Service Regular Visit

Normal Price: RM65/month Normal Price: RM105/month  
RM50/month RM80/month

7 YEARS Self-Service 5 YEARS Self-Service 7 YEARS Regular Visit 5 YEARS Regular Visit



Tankless Water Purifier

- 4-Stage All Puri Filter System • Internal Stainless Steel Pipe • UV Sterilization

WD217AN (Silver) Hot Ambient

Outright

Regular Visit Regular Visit

RM3,250 RM60/month

2 YEARS Regular Visit 7 YEARS Regular Visit

Normal Price: RM100/month

RM85/month

5 YEARS Regular Visit

\*Endorsed by BAF for 99.9% reduction in exposure to live house dust mite and bacteria (E.coli and S. aureus). Certified by VED for reducing 99.9% of bacteria (E.coli and S. aureus) with Sanitary – Normal program. Tested by Intertek for removing 92% of hazardous substances (Perchloroethylene) generated during dry cleaning based on Sanitary – Normal Program. Promotion valid while stocks last. MSRP is subject to change without prior notice. Please submit a completed redemption form to redeem your gift(s). Redemption is on a first-come, first-served basis. Images are for illustration purposes only and may differ from actual products. For continual products development, LG reserves the right to change specifications, availability and pricing without further notice. Terms and conditions apply.

# LG PuriCare™ Air Purifier



## Air Purifier

- 360° Purification
- 6-Step Filtration
- Clean Booster



### Outright

AS10GDPB0  
(Romantic Rose)

**RM4,600**

### Rental

**RM95/month**

**7 YEARS Self-Service**

**RM125/month**

**5 YEARS Self-Service**



Coverage area:  
100m<sup>2</sup>



### Outright

AS10GDWBO  
(White)

**RM4,300**

### Rental

**RM90/month**

**7 YEARS Self-Service**

**RM120/month**

**5 YEARS Self-Service**



Coverage area:  
100m<sup>2</sup>



### Outright

AS65GDPB0  
(Romantic Rose)

**RM3,550**

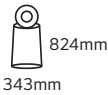
### Rental

**RM65/month**

**7 YEARS Self-Service**

**RM95/month**

**5 YEARS Self-Service**



Coverage area:  
61.2m<sup>2</sup>



### Outright

AS65GDWBO  
(White)

**RM3,250**

### Rental

**RM60/month**

**7 YEARS Self-Service**

**RM90/month**

**5 YEARS Self-Service**



Coverage area:  
61.2m<sup>2</sup>



## LG Styler™ Steam Clothing Care



The Smart Wardrobe – Hygiene in Style. Your Personal Fabric Refresher, Sanitiser, Steamer.



### Moving Hanger

Shakes off wrinkles and odours in just 20 minutes



### Gentle Dry

Dry delicate items without heat or tumbling



### LG TrueSteam™

Keep your clothes free from germ and allergen.



### Mirror Design

Try out your clothes instantly with Mirror Design

S3MFC (Mirror)

**RM6,399**

~~RM8,499~~ Save RM2,100



Endorsed by BAF for 99.9% reduction in exposure to live house dust mite and bacteria (E.coli and S. aureus). Certified by VED for reducing 99.9% of bacteria (E.coli and S. aureus) with Sanitary – Normal program. Tested by Intertek for removing 92% of hazardous substances (Perchloroethylene) generated during dry cleaning based on Sanitary – Normal Program. LG PuriCare™ products under Direct Selling Scheme or Rental Scheme are NOT entitled for all promotions stated in the leaflet, Cashback and Star Stash Rewards. Promotion valid while stocks last. MSRP is subject to change without prior notice. Please submit a completed redemption form to redeem your gift(s). Redemption is on a first-come, first-served basis. Images are for illustration purposes only and may differ from actual products. For continual products development, LG reserves the right to change specifications, availability and pricing without further notice. Terms and conditions apply.

**PRODUCT LIST**

All products listed below are entitled for all promotions stated in the leaflet, Rebate and Mix & Match with T&C.

Television	Laundry	Refrigerator	Styler	Water Purifier			
OLED83C3PSA.ATS	75QNED75SRA.ATS	TH21130SAK.ABLREML	GC-B414FGQ.ABERLML	GN-C207HLCM.APZRLML	S3-Q24K22PA.ATWGSEE	S3-Q24K2RPA.ATWGSEE	WDS18BAN.ABGRML
OLED77G3PSA.ATS	65QNED75SRA.ATS	TV2516VSAJ.APBREML	GC-B411GPF.AMMRLML	GN-C207SGGM.ABMRML	S3-Q09JA3WA.ATWGSEE	S3-Q09JATPA.ATWGSEE	WDS18BAN.ACMRML
OLED77C3PSA.ATS	55QNED75SRA.ATS	TV2517SV3B.ABMREML	GN-B332PMGB.ACMRML	GR-H802HQHM.ACMRML	S3-Q12JA3WA.ATWGSEE	S3-Q12JATPA.ATWGSEE	WDS16GAN.ASLRML
OLED65G3PSA.ATS	86UR8050SPS.ATS	TV2518SV3B.ABMREML	GN-B332PBBG.ABNRLML	GC-B459QG9D.APBRML	S3-Q18KL3WA.ATWGSEE	S3-Q18KLTPA.ATWGSEE	WDS16GAN.ANVRML
OLED65C3PSA.ATS	75UR8050SPS.ATS	TV2520SV7K.APBREML	GN-B332PPBG.ACKRML	GC-B257QYL.ADSRLML	S3-Q24K23WA.ATWGSEE	S3-Q24K2TPA.ATWGSEE	WDS16GAN.AWHRML
OLED65A3PSA.ATS		TV2724SV9K.APBREML	GN-B372PBK.ABLRML	GN-B257SLVL.APZRLML	S3-Q09WASAB.ATWGSEE	S3-Q09JATPA.ATWGSEE	WDS16GAN.ANVRML
OLED55C3PSA.ATS	<b>Sound Bar</b>	FV1409SA4W.ABWRML	GN-B392PLGK.APZRLML	GC-L257CQEL.AMCRML	S3-Q12JA3AD.ATWGSEE	S3-Q12JATPA.ATWGSEE	WD217AN.ASLRML
OLED55A3PSA.ATS	SC95.DMYSLLK	FV1450S4W.ABWRML	GN-B392PBK.ABLRML	GC-M257CGFL.AMCRML	S3-C09HZCAA.DXWASEE	S3-Q18KLPPA.ATWGSEE	
86QNEB86SRA.ATS	S95QR.DMYSLLK	FV1412S3B.ABLREML	GN-B452PBK.ABNRLML	GC-V257CQFW.AEPRML	S3-C12HZCAA.DXWASEE	S3-Q24K2PPA.ATWGSEE	<b>Air Purifier</b>
86QNEB18SRA.ATS	S90QY.DMYSLLK	FV1412S3P.APTRML**	GN-B452PMFK.ACMRML	GC-Q257CQFL.AMCRML**	S3-C18HZCAA.DXWASEE	S3-Q09WAPWL.ATWGSEE	AS10GDPB0.AML
75QNEB18SRA.ATS	S80QY.DMYSLLK	FV1414S3B.ABLREML**	RH10VHP2W.BBWRML	GC-X257CSES.ABSRML	S3-Q09JARPA.ATWGSEE	S3-Q12JAPWL.ATWGSEE	AS65GDPB0.AML
65QNEB18SRA.ATS		F2515TGW.ABWRML	RH10VHP2B.BBLREML	GC-X257CQES.AMCRML	S3-Q12JAPWL.ATWGSEE	S3-Q12JAPWL.ATWGSEE	AS10GDPB0.AML
55QNEB18SRA.ATS		F2724SVRW.ABWRML	GN-H602XHMM.ABLRML	GR-A24FQSMB.AMERLML	S3-Q18KL2PA.ATWGSEE	S3-Q18KL2PA.ATWGSEE	AS65GDPB0.AML

**TOUCH 'N GO eWALLET CREDIT / S PAY GLOBAL LOYALTY REWARD VOUCHER REBATE PROMOTION**

- This 'Touch 'n Go eWallet Credit / S PAY GLOBAL Loyalty Reward Voucher Rebate Promotion' is sponsored by LG Electronics (M) Sdn Bhd 200001003055 (505660-U) (AUL932279) ("LGE") subject to the Terms & Condition herein.
- Promotion Period:** 'Touch 'n Go eWallet Credit / S PAY GLOBAL Loyalty Reward Voucher Rebate Promotion' ("Promotion") starts from **8th March 2024 – 30th April 2024 [23.59PM]**.
- Eligible Products** are selected LG products as per listed in the leaflet (except LG PuriCare™ products under Direct Selling Scheme or Rental Scheme).
- Eligible Gift(s)**: Eligible Participants are entitled to redeem one (1) time Touch 'n Go eWallet Credit / S PAY GLOBAL Loyalty Reward Voucher. \*S PAY GLOBAL Loyalty Reward Voucher is applicable in Sarawak only.
- Eligible Entries:** All eligible entries must be submit via <https://www.lg.com/my/promotions/lgrwards-hebat-roya-ceria-bersama-2024> within the due date of **31st May 2024 [23.59PM]** from the Promotion Period. All other entries received after **31st May 2024 [23.59PM]** will be considered null and void.
- Redemption is based on a first-come, first-serve basis and while stocks last. Delivery of the redemption item will be made available June 2024 onwards.
- Eligible Participants:** This Promotion is open to legal residents of Malaysia above the age of 18 years whose name appears on the official receipt of purchase of an Eligible Product(s) from any Participating Retailer(s) during the Promotion Period and whose name appears on the duly completed, signed and submitted Redemption Form together with a duplicate copy of the Product Receipt in accordance with the instruction hereto, except the employees and their immediate families of LGE, participating LGE authorized retailers and partner agencies. For the avoidance of doubt, the event is open to individuals only. Corporate or other entities or groups are not eligible to participate. LGE reserves the right to verify an individual eligibility to entrants.
- All forms will only be deemed eligible when the participant details are complete in the form. Participants must ensure that the details provided in the form are true, accurate, current and complete with the original purchase receipt. LGE will not entertain any requests by Participants to amend any errors made by Participants in the redemption form submitted to us.
- Participants are advised not to change the contact number filled in the submission form before the Eligible Gift(s) is credited to their account. If participant change the contact number given in the submission form which result the Eligible Gift(s) credited to other individual, LGE reserves the right to reject the appeal and to reimburse the Eligible Gift(s) to the said participant.
- The Promotion shall be void where restricted or prohibited by law.
- LGE collects personal data in order to conduct this promotion and entry is conditional on providing this personal data. During the Promotion Period, LGE or its appointed agencies and/or relevant third party merchant may collect customers information including personal information in the form of, among others, survey forms, redemption of Gift Card(s) forms, interviews, audio recordings, visual recordings and photographs (whether on our own or by appointed service provider) taken during the Promotion. By participating in the Promotion, you agree to the collection, use, disclosure and processing of your personal information by LG Electronics (M) Sdn Bhd ("LGE"), its affiliates, third party, business partners and/or service providers in order to conduct the Promotion, and in accordance with the LGE Privacy Policy at LGE will also use and handle personal data as set out in its Privacy Policy, which can be viewed <https://www.lg.com/my/privacy>. A request to access, update or correct any private information should be directed to LGE.
- Participating retailers: LGE authorized retailers in East and West Malaysia only.
- LGE reserves the right to reject any incomplete submission form without prior notice to participants. The Eligible Gift(s) shall be made via "direct credit" into customer's Touch 'n Go eWallet / S PAY GLOBAL account. The validation process will take up to 60 days or more from date of the email and Participants are advised to provide valid and complete personal information especially contact number and e-mail address, in the event any further information needed regarding their Touch 'n Go eWallet / S PAY GLOBAL account.
- LGE will not assume any responsibility or liability for the Touch 'n Go eWallet Credit / S PAY GLOBAL Loyalty Reward Voucher. LGE expressly excludes and disclaims any representations, warranties or endorsement, implied or express, written or oral, of the gift offered under this Promotion, including but not limited to any warranty of quality, merchantability, fitness for a particular purpose, health and safety. The Touch 'n Go eWallet Credit / S PAY GLOBAL Loyalty Reward Voucher is offered solely by the merchant under such Terms and Conditions as may be determined by the merchant. Any dispute arising from or in connection with the gift offered by the merchant shall be resolved by the users directly with the merchant.
- LGE reserves the right to change the Eligible Gift(s) with other gift(s) or products of similar value without prior notice.
- LGE reserves the right to reject any Participants if LGE suspects in its sole discretion that the purchase of Eligible Product is to be fraudulent in any way or otherwise.
- LGE reserves the right to change any condition on the promotion or products without prior notice.
- The Eligible Gift(s) is not transferable or exchangeable and cannot be taken as cash. The Eligible Gift(s) must be taken as offered and cannot be varied.
- In case of any dispute, LGE reserves the right to make the final decision. LGE's decision is final and binding no further correspondences or appeal will be entertained.
- Participants can keep track on their submission and Eligible Gift(s) status and details from LG rewards self-tracking site: <https://lgrwards.lgcr.com/my/lgrwards/tracker>
- Successful participant will be notified via call or email by LGE's appointed agency. If the Eligible Participant(s) cannot be reached within Seven (7) days from the date of notification, through the contact information provided at the time of entry, the Eligible gift for that for that particular Eligible Participant(s) shall be forfeited.
- All entries must be attached with original sales order, purchase receipt and invoice ONLY, together with photo of the product's serial number placed on the product (not the box). LGE reserves the right to request any supporting documents from Participants for verification purpose.
- Photocopies of redemption form are not allowed and all the redemption must be submitted through the online portal only.
- Proof of mailing, faxing or delivering (in any manner) other than online submission of the redemption form to LG Electronics (M) Sdn Bhd does not represent proof that LGE has received such items.
- You have fully and unconditionally agree to be bound by all rules, terms and condition of this Promotion and agree to keep harmless to the organizers from any claims, losses, liability and damage, loss, accident to person or property or from the respective your breach of the rules, terms and condition of this Promotion or your infringement of any law, regulation and / or policies.

- Each Participant agrees to take part in any and all marketing, promotional, publicity exercises with respect to this Promotion; agrees for LGE to use his/her name, voice, photograph, likeness or other personal identifiable information in any media for the promotion and publicity of this Promotion and/or LGE products and irrevocably grants LGE all consents and waivers necessary hereunder, including in respect of any promotional photographs and/or audio/video recordings taken in respect of this Promotion.
- Each participant agrees that LGE shall be at liberty to publish, promote, copy, reproduce, transmit, display, edit, adapt, modify, create derivative works of and/or otherwise distribute or use his/her particulars (including any publicly available Facebook/Instagram profile photo and details):
  - In connection with this Promotion and/or LGE products;
  - For the promotion and publicity of this Promotion and/or LGE products;
  - In any manner, format or media whether now known or hereinafter created, and in any part of the world, including without limitation on online platforms such as Facebook, YouTube, Twitter and Instagram; at LGE's sole discretion and royalty-free and without obligation of attribution or consent.
- Participants will only be confirmed as winner(s) after the verification of validity of each participation. LGE reserves the right to check the validity of any participation. Entries failing to comply with the Terms and Conditions herein will not be accepted.
- LGE reserves the right to disqualify any participant suspected of fraud, hacking, tampering with the Promotion submission process or if LGE believes that the Participant's entry and/or results has been manipulated in any way by machines or computers or breach of any terms and conditions of the Promotion.
- By participating in this Promotion, each consumer agrees to release and hold LGE and its employee, officers, directors, shareholders, agents, representatives, parents companies, affiliate, subsidiaries, licenses, advertising, promotion and fulfillment agencies, and legal advisor, harmless from any and all losses, damages, rights claims and actions of any kind in connection with the Promotion or resulting from acceptance, possession, use or misuse of the Eligible Gift or from any gift-related activity, including without limitation, personal injury, death and property damage, and claims based on publicity rights, defamation, or invasion of privacy.
- All pictures and /or images of the Eligible Product(s) and the Eligible Gift(s) found in any advertising and marketing material are for illustration purposes only and may be different from the actual products.
- The Terms and Condition stated herein shall be governed by and interpreted in accordance with Malaysian Laws and the parties submit to the exclusive jurisdiction of the Malaysian Courts.

**IMPORTANT:** Other terms and conditions apply. Please visit <https://www.lg.com/my/promotions/hebat-roya-ceria-bersama-2024-terms> for LGE's Promotion Terms and Conditions. If you do not agree with any of these terms and conditions for any reason, please do not participate in the Promotional Activity and do not submit any entry.

**MIX & MATCH PROMOTION**

- This 'Mix & Match Promotion' is sponsored by LG Electronics (M) Sdn Bhd 200001003055 (505660-U) (AUL932279) ("LGE") subject to the Terms & Condition herein.
- Promotion Period:** 'Mix & Match Promotion' ("Promotion") starts from **8th March 2024 – 30th April 2024 [23.59PM]**.
- Eligible Products** are selected LG products as per listed in the leaflet (except LG PuriCare™ products under Direct Selling Scheme or Rental Scheme).
- Eligible Participants who purchase minimum 2 (TWO) eligible products listed in the leaflet from different product category in a single receipt during Promotion Period from any of the Participating Retailer with the following invoice amount, are entitled to redeem the Eligible Gift(s) on top of Touch 'n Go eWallet Credit / S PAY GLOBAL Loyalty Reward Voucher Rebate Promotion above. Combining separate invoices despite being same purchaser name will not be entitled for the Promotion.

\*S PAY GLOBAL Loyalty Reward Voucher is applicable in Sarawak only.

Invoice Amount (RM)	Eligible Gift(s): Touch 'n Go eWallet Credit S PAY GLOBAL Loyalty Reward Voucher (RM)
3,000 – 4,999	150
5,000 – 6,999	250
7,000 & Above	400

- Product Category:
  - Category TV: OLED, QNED & UHD
  - Category Soundbar
  - Category Laundry: WashTower, Washer Dryer, Top Load, Front Load
  - Category Dryer
  - Category Refrigerator: InstaView, Multi Door, Top Freezer, Bottom Freezer, Side-by-Side (SBS)
  - Category Air Conditioner: Premium, Deluxe, Classic & Lite
  - Category Water Purifier
  - Category Air Purifier
  - Category Styler
  - Category Vacuum
- Pairing products from the same category, such purchase will not be entitled for this Promotion.
- Eligible Entries:** All eligible entries must be submit via <https://www.lg.com/my/promotions/lgrwards-hebat-roya-ceria-bersama-2024> within the due date of **31st May 2024 [23.59PM]** from the Promotion Period. All other entries received after **31st May 2024 [23.59PM]** will be considered null and void.
- Redemption is based on a first-come, first-serve basis and while stocks last. Delivery of the redemption item will be made available June 2024 onwards.
- Eligible Participants:** This Promotion is open to legal residents of Malaysia above the age of 18 years whose name appears on the invoice/official receipt of purchase of an Eligible Product(s) from any LGE participating retailer during the Promotion, except the employees and their immediate families of LGE, participating LGE authorized retailers and partner agencies. For the avoidance of doubt, the event is open to individuals only. Corporate or other entities or groups are not eligible to participate. LGE reserves the right to verify an individual eligibility to entrants.
- Eligible Participants are only entitled to one (1) unit of Eligible Gift(s) despite the number of Eligible Products purchased and /or number of entries submitted by the Eligible Participants.
- All forms will only be deemed eligible when the participant details are complete in the form. Participants must ensure that the details provided in the form are true, accurate, current and complete with the original purchase receipt. LGE will not entertain any requests by Participants to amend any errors made by Participants in the redemption form submitted to us.
- Participating Retailers: LGE authorized retailers in East and West Malaysia only.
- LGE reserves the right to reject any incomplete submission form without prior notice to participants. LGE will not assume any responsibility or liability for the Eligible Gift(s). LGE expressly excludes and disclaims any representations, warranties or endorsement, implied or express, written or oral, of the gift offered under this Promotion, including but not limited to any warranty of quality, merchantability, fitness for a particular purpose, health and safety. The Eligible Gift(s) is offered solely by the respective merchant under such Terms and Conditions as may be determined by the merchant. LGE will not assume any responsibility or liability for the Eligible Gift which is provided on "AS IS" basis. Any dispute arising from or in connection with the gift offered by the merchant shall be resolved by the users directly with the merchant.
- LGE reserves the right to change the Eligible Gift(s) with other gift(s) or products of similar value in the event the Eligible Gift(s) is out of stock without prior notice.
- LGE reserves the right to reject any Participants if LGE suspects in its sole discretion that the purchase of Eligible Product is to be fraudulent in any way or otherwise.
- LGE reserves the right to change any condition on the promotion or products without prior notice.
- The Eligible Gift(s) is not transferable or exchangeable and cannot be taken as cash. The Eligible Gift(s) must be taken as offered and cannot be varied.
- In case of any dispute, LGE reserves the right to make the final decision. LGE's decision is final and binding no further correspondences or appeal will be entertained.
- Successful participant will be notified via call or email by LGE's appointed agency. If the Eligible Participant(s) cannot be reached within Seven (7) days from the date of notification, through the contact information provided at the time of entry, the Eligible gift for that for that particular Eligible Participant(s) shall be forfeited.
- All entries must be attached with original sales order, purchase receipt and invoice ONLY, together with photo of the product's serial number placed on the product (not the box). LGE reserves the right to request any supporting documents from Participants for verification purpose.
- Photocopies of redemption form are not allowed and all the redemption must be submitted through the online portal only.
- Proof of mailing, faxing or delivering (in any manner) other than online submission of the redemption form to LG Electronics (M) Sdn Bhd does not represent proof that LGE has received such items.

- You have fully and unconditionally agree to be bound by all rules, terms and condition of this Promotion and agree to keep harmless to the organizers from any claims, losses, liability and damage, loss, accident to person or property or from the respective your breach of the rules, terms and condition of this Promotion or your infringement of any law, regulation and / or policies.
- Each Participant agrees to take part in any and all marketing, promotional, publicity exercises with respect to this Promotion; agrees for LGE to use his/her name, voice, photograph, likeness or other personal identifiable information in any media for the promotion and publicity of this Promotion and/or LGE products and irrevocably grants LGE all consents and waivers necessary hereunder, including in respect of any promotional photographs and/or audio/video recordings taken in respect of this Promotion.
- Each participant agrees that LGE shall be at liberty to publish, promote, copy, reproduce, transmit, display, edit, adapt, modify, create derivative works of and/or otherwise distribute or use his/her particulars (including any publicly available Facebook/Instagram profile photo and details):
  - In connection with this Promotion and/or LGE products;
  - For the promotion and publicity of this Promotion and/or LGE products;
  - In any manner, format or media whether now known or hereinafter created, and in any part of the world, including without limitation on online platforms such as Facebook, YouTube, Twitter and Instagram; at LGE's sole discretion and royalty-free and without obligation of attribution or consent.
- Participants will only be confirmed as winner(s) after the verification of validity of each participation. LGE reserves the right to check the validity of any participation. Entries failing to comply with the Terms and Conditions herein will not be accepted.
- LGE reserves the right to disqualify any participant suspected of fraud, hacking, tampering with the Promotion submission process or if LGE believes that the Participant's entry and/or results has been manipulated in any way by machines or computers or breach of any terms and conditions of the Promotion.
- By participating in this Promotion, each consumer agrees to release and hold LGE and its employee, officers, directors, shareholders, agents, representatives, parents companies, affiliate, subsidiaries, licenses, advertising, promotion and fulfillment agencies, and legal advisor, harmless from any and all losses, damages, rights claims and actions of any kind in connection with the Promotion or resulting from acceptance, possession, use or misuse of the Eligible Gift or from any gift-related activity, including without limitation, personal injury, death and property damage, and claims based on publicity rights, defamation, or invasion of privacy.
- All pictures and /or images of the Eligible Product(s) and the Eligible Gift(s) found in any advertising and marketing material are for illustration purposes only and may be different from the actual products.
- The Terms and Condition stated herein shall be governed by and interpreted in accordance with Malaysian Laws and the parties submit to the exclusive jurisdiction of the Malaysian Courts.

**IMPORTANT:** Other terms and conditions apply. Please visit <https://www.lg.com/my/promotions/hebat-roya-ceria-bersama-2024-terms> for LGE's Promotion Terms and Conditions. If you do not agree with any of these terms and conditions for any reason, please do not participate in the Promotional Activity and do not submit any entry.

**FREE GIFT PROMOTION**

- This "Free Gift Promotion" is sponsored by LG Electronics (M) Sdn Bhd 200001003055 (505660-U) (AJL932279) ("LGE") subject to the Terms & Conditions herein.
- Promotion Period: "Free Gift Promotion" ("Promotion") starts from **8th March 2024 and will end on 30th April 2024 [23.59PM]**.
- Eligible Products** are selected LG products as per listed in the leaflet (except LG PuriCare™ products under Direct Selling Scheme or Rental Scheme).
- Eligible Participants who purchase eligible products listed in the leaflet during Promotion Period from any of the Participating Retailer are entitled to redeem the Eligible Gift(s) on top of Touch 'n Go eWallet Credit / S PAY GLOBAL Loyalty Reward Voucher Rebate Promotion and Mix & Match Promotion above.

Eligible Products	Eligible Gift(s)
<b>TV</b>	<b>Free Three (3) months *Subscription of Apple TV+. Redemption period valid until 30 April 2024.</b>
<b>Soundbar</b>	<b>Free Three (3) months *Subscription of Spotify Premium Limited to 400 units only.</b>
<b>WashTower(WT21165HB)</b>	<b>One (1) unit of Handstick Vacuum, A9N-LITE worth RM2,299. Limited to 100 units only.</b>

\*Subscription fee will be imposed by respective service provider immediately upon expiry of free subscription period. Applicable for new subscribers only.

- Eligible Entries:** All eligible entries must be submit via <https://www.lg.com/my/promotions/lgrwards-hebat-roya-kerja-bersama-2024> within the due date of **31st May 2024 [23.59PM]** from the Promotion Period. All other entries received after **31st May 2024 [23.59PM]** will be considered null and void.
- Redemption is based on a first-come, first-serve basis and while stocks last. Delivery of the redemption item will be made available June 2024 onwards.
- Eligible Participants:** This Promotion is open to legal residents of Malaysia above the age of 18 years whose name appears on the invoice/official receipt of purchase of an Eligible Product(s) from any LG participating retailer during the Promotion, except the employees and their immediate families of LGE, participating LGE authorized retailers and partner agencies. For the avoidance of doubt, the event is open to individuals only. Corporate or other entities or groups are not eligible to participate. LGE reserves the right to verify an individual eligibility to entrants.
- Eligible Participants are only entitled to one (1) unit of Eligible Gift(s) despite the number of Eligible Products purchased and /or number of entries submitted by the Eligible Participants.
- All forms will only be deemed eligible when the participant details are complete in the form. Participants must ensure that the details provided in the form are true, accurate, current and complete with the original purchase receipt. LGE will not entertain any requests by Participants to amend any errors made by Participants in the redemption form submitted to us.
- Participants are advised not to change the postal address filled in the submission form before the Eligible Gift(s) is couriered to their house. If participant change the postal address given in the submission form which result the Eligible Gift(s) couriered to other individual, LGE reserves to right to reject the appeal and to reimburse the Eligible Gift(s) to the said participant.
- The Promotion shall be void where restricted or prohibited by law.

- LGE collects personal data in order to conduct this promotion and entry is conditional on providing this personal data. During the Promotion Period, LGE or its appointed agencies and/or relevant third party merchant may collect customers information including personal information in the form of, among others, survey forms, redemption of Gift Card(s) forms, interviews, audio recordings, visual recordings and photographs (whether on our own or by appointed service provider) taken during the Promotion. By participating in the Promotion, you agree to the collection, use, disclosure and processing of your personal information by LG Electronics (M) Sdn Bhd ("LGE"), its affiliates, third party, business partners and/or service providers in order to conduct the Promotion, and in accordance with the LGE Privacy Policy at LGE will also use and handle personal data as set out in its Privacy Policy, which can be viewed <https://www.lg.com/my/privacy>. A request to access, update or correct any private information should be directed to LGE.
- Participating Retailers: LGE authorized retailers in East and West Malaysia only.
- LGE reserves the right to reject any incomplete submission form without prior notice to participants.
- LGE will not assume any responsibility or liability for the Eligible Gift(s). LGE expressly excludes and disclaims any representations, warranties or endorsement, implied or express, written or oral, of the gift offered under this Promotion, including but not limited to any warranty of quality, merchantability, fitness for a particular purpose, health and safety. The Eligible Gift(s) is offered solely by the respective merchant under such Terms and Conditions as may be determined by the merchant. LGE will not assume any responsibility or liability for the Eligible Gift which is provided on "AS IS" basis. Any dispute arising from or in connection with the gift offered by the merchant shall be resolved by the users directly with the merchant.
- LGE reserves the right to change the Eligible Gift(s) with other gift(s) or products of similar value in the event the Eligible Gift(s) is out of stock without prior notice.
- LGE reserves the right to reject any Participants if LGE suspects in its sole discretion that the purchase of Eligible Product is to be fraudulent in any way or otherwise.
- LGE reserves the right to change any condition on the promotion or products without prior notice.
- The Eligible Gift(s) is not transferable or exchangeable and cannot be taken as cash. The Eligible Gift(s) must be taken as offered and cannot be varied.
- In case of any dispute, LGE reserves the right to make the final decision. LGE's decision is final and binding no further correspondences or appeal will be entertained.
- Successful participant will be notified via call or email by LGE's appointed agency. If the Eligible Participant(s) cannot be reached within Seven (7) days from the date of notification, through the contact information provided at the time of entry, the Eligible gift for that for that particular Eligible Participant(s) shall be forfeited.
- All entries must be attached with original sales order, purchase receipt and invoice ONLY, together with photo of the product's serial number placed on the product (not the box). LGE reserves the right to request any supporting documents from Participants for verification purpose.
- Photocopies of redemption form are not allowed and all the redemption must be submitted through the online portal only.
- Proof of mailing, faxing or delivering (in any manner) other than online submission of the redemption form to LG Electronics (M) Sdn Bhd does not represent proof that LGE has received such items.
- You have fully and unconditionally agree to be bound by all rules, terms and condition of this Promotion and agree to keep harmless to the organizers from any claims, losses, liability and damage, loss, accident to person or property or from the respective your breach of the rules, terms and condition of this Promotion or your infringement of any law, regulation and / or policies.

- Each Participant agrees to take part in any and all marketing, promotional, publicity exercises with respect to this Promotion; agrees for LGE to use his/her name, voice, photograph, likeness or other personal identifiable information in any media for the promotion and publicity of this Promotion and/or LGE products and irrevocably grants LGE all consents and waivers necessary hereunder, including in respect of any promotional photographs and/or audio/video recordings taken in respect of this Promotion.
- Each Participant agrees that LGE shall be at liberty to publish, promote, copy, reproduce, transmit, display, edit, adapt, modify, create derivative works of and/or otherwise distribute or use his/her particular (including any publicly available Facebook/Instagram profile photo and details):
  - In connection with this Promotion and/or LGE products;
  - For the promotion and publicity of this Promotion and/or LGE products
  - In any manner, format or media whether now known or hereinafter created, and in any part of the world, including without limitation on online platforms such as Facebook, YouTube, Twitter and Instagram; at LGE's sole discretion and royalty-free and without obligation of attribution or consent.
- Participants will only be confirmed as winner(s) after the verification of validity of each participation. LGE reserves the right to check the validity of any participation. Entries failing to comply with the Terms and Conditions herein will not be accepted.
- LGE reserves the right to disqualify any participant suspected of fraud, hacking, tampering with the Promotion submission process or if LGE believes that the Participant's entry and/or results has been manipulated in any way by machines or computers or breach of any terms and conditions of the Promotion.
- By participating in this Promotion, each consumer agrees to release and hold LGE and its employee, officers, directors, shareholders, agents, representatives, parents companies, affiliate, subsidiaries, licenses, advertising, promotion and fulfillment agencies, and legal advisor, harmless from any and all losses, damages, rights claims and actions of any kind in connection with the Promotion or resulting from acceptance, possession, use or misuse of the Eligible Gift or from any gift-related activity, including without limitation, personal injury, death and property damage, and claims based on publicity rights, defamation, or invasion of privacy.
- All pictures and /or images of the Eligible Product(s) and the Eligible Gift(s) found in any advertising and marketing material are for illustration purposes only and may be different from the actual products.
- The Terms and Condition stated herein shall be governed by and interpreted in accordance with Malaysian Laws and the parties submit to the exclusive jurisdiction of the Malaysian Courts.

**IMPORTANT:** Other terms and conditions apply. Please visit

<https://www.lg.com/my/promotions/hebat-roya-kerja-bersama-2024-terms> for LGE's Promotion Terms and Conditions. If you do not agree with any of these terms and conditions for any reason, please do not participate in the Promotional Activity and do not submit any entry.

**LG PURICARE™ PROMOTION TERMS AND CONDITIONS**

**Outright Promotion**

Customers, who successfully purchase the LG PuriCare™ Eligible Products during Promotion Period, are entitled to designated offer of the Eligible Product of LG PuriCare™ and designated years of LG CareShip as shown in table below.

Category	Model	Outright Price (RM)		
		With 2 Years Filter Subscription	With 2 Years Regular Visit	
Water Purifier	WDS18ANABGRML	3,200	4,000	-
	WDS18ANACMRML			
	WDS18ANASRLML	3,200	4,000	-
	WDS16ANANVRLML			
	WDS16ANAVHRLML			
	WD216ANANVRLML	2,800	3,600	-
	WD217ANASRLML		3,250	
Air Purifier	AS10GDPB0AML	-	-	4,600
	AS10GDWB0AML	-	-	4,300
	AS65GDPB0AML	-	-	3,550
	AS65GDWB0AML	-	-	3,250

\*Filter Subscription means the filter(s) will be delivered to customer's doorstep on a periodic schedule for Customer to perform on their own the services (Filter change) on Eligible Product.

**Rental Promotion**

Customers, who successfully rent the LG PuriCare™ Eligible Products during Promotion Period, are entitled to the respective introductory rental price.

Category	Model	Discounted Rental Price (RM)			
		Filter Subscription		Regular Visit	
		With 5 Years	With 7 Years	With 5 Years	With 7 Years
Water Purifier	WDS18ANABGRML	90/month (N/P: 105/month)	60/month (N/P: 65/month)	110/month (N/P: 125/month)	80/month (N/P: 85/month)
	WDS18ANACMRML				
	WDS16ANANVRLML	90/month (N/P: 105/month)	60/month (N/P: 65/month)	110/month (N/P: 125/month)	80/month (N/P: 85/month)
	WDS16ANAVHRLML				
	WD216ANANVRLML	80/month (N/P: 95/month)	50/month (N/P: 55/month)	100/month (N/P: 115/month)	70/month (N/P: 75/month)
	WD217ANASRLML	-	-	85/month (N/P: 100/month)	60/month
Air Purifier	AS10GDPB0AML	125 / month	95 / month	-	-
	AS10GDWB0AML	120 / month	90 / month	-	-
	AS65GDPB0AML	95 / month	65 / month	-	-
	AS65GDWB0AML	90 / month	60 / month	-	-
Combo	WDS18ANABGRML + AS65GDPB0AML	173/ month	113/ month	-	-
	WDS18ANACMRML + AS65GDPB0AML	173/ month	113/ month	-	-
	WDS16ANANVRLML + AS65GDPB0AML	163/ month	103/ month	-	-

\*Filter Subscription means the filter(s) will be delivered to customer's doorstep on a periodic schedule for Customer to perform on their own the services (Filter change) on Eligible Product.

- This LG PURICARE™ is sponsored by LG Electronics (M) Sdn Bhd 200001003055 (505660-U) (AJL932279) ("LGE") subject to the Terms & Conditions herein.
- Promotion Period:** This Promotion starts from **8th March 2024 – 30th April 2024 [23.59PM]**.

- This Promotion is open to legal residents of Malaysia above the age of 18 years whose name appears on the outright/rental contract of an Eligible Product(s) during the Promotion Period and whose name appears on the duly completed, signed and submitted contract in accordance with the instruction hereto, except the employees and their immediate families of LGE, participating LGE authorized retailers and partner agencies. For the avoidance of doubt, the event is open to individuals only. Corporate or other entities or groups are not eligible to participate. LGE reserves the right to verify an individual eligibility to entrants.
- Eligible Participants:** Customers who successfully purchase any of the Eligible Products by signing the outright and/or rental contract during Promotion Period and to which outright and/or rental scheme had been approved by LGE. Customer must have had the Eligible Products installed within the due date of 17th March 2024 [23.59PM] from the Promotion Period. Copy of Outright/Rental Contract is needed to participate.
- Participating retailers:** Selected LGE authorized retailers (for retailer with rental scheme offer, please refer via this link: <https://www.lg.com/my/lg-puricare-rental-scheme-electronics-stores>)
- The Promotion shall be void where restricted or prohibited by law.
- LGE collects personal data in order to conduct this promotion and entry is conditional on providing this personal data. During the Promotion Period, LGE or its appointed agencies and/or relevant third party merchant may collect customer's information including personal information in the form of, among others, survey forms, redemption of Gift Card(s) forms, interviews, audio recordings, visual recordings and photographs (whether on our own or by appointed service provider) taken during the Promotion. By participating in the Promotion, you agree to the collection, use, disclosure and processing of your personal information by LG Electronics (M) Sdn Bhd ("LGE"), as its affiliates, third party, business partners and/or service providers in order to conduct the Promotion, and in accordance with the LGE Privacy Policy at LGE will also use and handle personal data as set out in its Privacy Policy, which can be viewed <https://www.lg.com/my/privacy>. A request to access, update or correct any private information should be directed to LGE.
- LGE reserves the right to change any condition on the promotion or products without prior notice.
- LGE reserves the right to reject any Eligible Participants if LGE suspects in its sole discretion that the purchase/rental of Eligible Product is to be fraudulent in any way or otherwise.
- By participating in this Promotion, each customer agrees to release and hold LGE and its employee, officers, directors, shareholders, agents, representatives, parents companies, affiliate, subsidiaries, licenses, advertising, promotion and fulfillment agencies, and legal advisor, harmless from any and all losses, damages, rights claims and actions of any kind in connection with the Promotion or resulting from acceptance possession user or misuse of the Eligible Gift or from any gift-related activity including without limitation personal injury, death and property damage, and claims based on publicity rights, defamation or invasion of privacy.
- You have fully and unconditionally agree to be bound by all rules, terms and condition of this Promotion and agree to keep harmless to the organizers from any claims, losses, liability and damage, loss, accident to person or property or from the respective your breach of the rules, terms and condition of this Promotion or your infringement of any law, regulation and / or policies.

- All pictures and/or images of the Eligible Product(s) found in any advertising and marketing material are for illustration purposes only and may be different from the actual products.
- The Terms and Condition stated herein shall be governed by and interpreted in accordance with Malaysian Laws and the parties submit to the exclusive jurisdiction of the Malaysian Courts.

**IMPORTANT:** Other terms and conditions apply.

If you do not agree with any of these terms and conditions for any reason, please do not participate in the Promotional Activity and do not submit any entry.

**Promotion Participation Conditions**

As a pre-condition of my participation in this Promotion, I hereby acknowledge and agree with the following:

- The information collected by LG Electronics (M) Sdn Bhd 200001003055 (505660-U) (AJL932279) ("LGE") which are submitted and/or will be submitted by me or on my behalf will be used in accordance with (a) LGE Privacy Policy stated in LGE's website at [www.lg.com/my/privacy](http://www.lg.com/my/privacy) and (b) compliance with relevant personal information protection laws and regulations for the following purpose(s):
  - LGE to organize, manage and administer the Promotion.
  - Other LGE marketing and promotional activities which may be organized by LGE from time to time.
- LGE may use my information, personal data, including sensitive personal data, and/or disclose such information to relevant LGE affiliates, government authorities, legal or other professional advisers, consultants, agents, and/or any relevant third parties for the Purpose (as defined in LGE's website).
- Such relevant LGE affiliates, government authorities, legal or other professional advisers, consultants, agents, and/or any relevant third parties may be located outside my country of residence and LGE may transfer my information, personal data, including sensitive personal data outside my country of residence for the Purpose as defined in LGE's website.

**Acknowledgement**

- I acknowledge and confirm that I have read and understood the Terms and Conditions of my participation in this Promotion and that I may contact LGE at +603 7962 7777 to change the consent granted herein relating to my personal information at any time.
- I hereby release LGE, LGE affiliates, government authorities, legal or other professional advisers, consultants, agents, and/or any relevant third parties from any and all liability in relation to their use, collection, disclosure and processing of my information, personal data, including sensitive personal data, in the manner and for the Purpose as described herein.
- I fully and unconditionally agree to be bound by all rules, terms and conditions of this Promotion and agree to indemnify LGE and the Participating Retailer from any claims, losses, liability, and damages of any kind that may be incurred, sustained, or arising in connection with my participation in this Promotion or my acceptance or misuse of the Prizes including but not limited to, any injury, death, damage, loss, or accident to person or property, or from my respective breach of the rules, terms and conditions of the Promotion or my infringement of any law, regulation and/or policies.

LG Consumer Electronics: 1300-82-2822 | LG PuriCare™: 1800-18-7874

For enquiries on redemption, please contact [support@lgcrm.com.my](mailto:support@lgcrm.com.my)

 LGMalaysia 
  lg\_malaysia 
  LGMalaysia 
  lgmalaysia 
  lg.com/my

LG Electronics (M) Sdn. Bhd. 200001003055 (C.o. No. 505660-U) (AJL932279)

A-08-01, Level 8, Block A, PJ8, No. 23, Jalan Barat, Section 8, 46050 Petaling Jaya, Selangor DE, Malaysia.

