



**LG 24 x 7 CUSTOMER CARE**  
1800-315-9999 1800-180-9999 (Toll Free)  
5757554 (Send SMS)

LG WhatsApp No. **9711709999**  
LG Service India Mobile App Available at Google Play

[www.facebook.com/lgindiapage/](https://www.facebook.com/lgindiapage/)  
[www.twitter.com/LGIndia](https://www.twitter.com/LGIndia)

To know more about LG, visit [www.lg.com/in](http://www.lg.com/in)  
For Corporate/Institutional enquiries, please write to [corp.enquiries@lge.com](mailto:corp.enquiries@lge.com)

Regd. Office: LG Electronics India Pvt. Ltd., A-24/6, Mohan Cooperative Industrial Estate, Mathura Road, New Delhi-110044

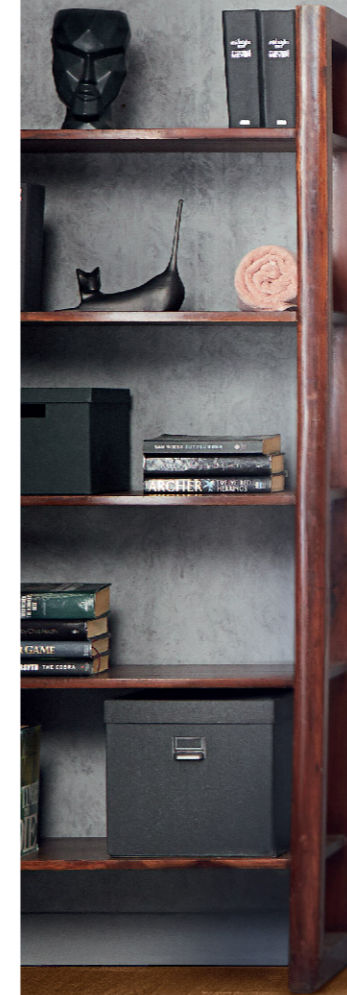
CIN No. U32107DL1997PTC220109



PRESENTING LG WASHING MACHINE

# GO Easy Intelligent!

with **AI ThinQ** MORE CONVENIENCE & MORE FABRIC CARE





DIFFERENT  
FABRICS?

Images/products shown are for illustration purposes only. Actual product may vary due to product enhancement. Features may vary from model to model. All third party logos, trademark and other Intellectual Properties are property of respective brands and LG doesn't hold any rights pursuant to same. For more details, visit [www.lg.com](http://www.lg.com)

## NO PROBLEM!

### Presenting AI Direct Drive™

Gone are the days when washing clothes included the hassles of separating clothes according to their fabric type and then choosing the correct wash cycle for them. Meet AI DD™. It not only detects the weight but also senses the softness of the fabric and then chooses the optimal wash pattern for the fabric by itself. Hence, it gives you peace of mind and freedom from the struggle of separating clothes depending on their fabric. And while at it, it also provides more convenience & more fabric care.

#### More Convenience

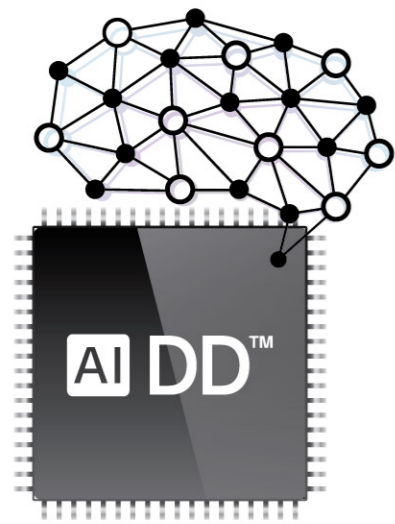
Automatically Detects Softness and Fabric Load

#### More Fabric Care

Provides Complete Fabric Protection

Images/products shown are for illustration purposes only. Actual product may vary due to product enhancement. Features may vary from model to model. All third party logos, trademark and other Intellectual Properties are property of respective brands and LG doesn't hold any rights pursuant to same. For more details, visit [www.lg.com](http://www.lg.com)





### Why Choose LG AI DD™?

From Conventional to Artificial Intelligence, LG AI DD™ technology has come a long way. It has data of 20,000 Wash Patterns, tested with various laundry characteristics, to give your clothes a perfect wash, every time. And the machine does all this on its own, making it a gift of hassle-free life.



**AI DD™**  
AUTOMATICALLY SELECTS OPTIMAL WASH PATTERN FROM  
**20,000 WASH PATTERNS**

Images/products shown are for illustration purposes only. Actual product may vary due to product enhancement. Features may vary from model to model. All third party logos, trademark and other Intellectual Properties are property of respective brands and LG doesn't hold any rights pursuant to same. For more details, visit [www.lg.com](http://www.lg.com)

# WASH SMARTLY. LIVE WORRY-FREE.

Go Easy  
Go Intelligent!



Images/products shown are for illustration purposes only. Actual product may vary due to product enhancement. Features may vary from model to model. All third party logos, trademark and other Intellectual Properties are property of respective brands and LG doesn't hold any rights pursuant to same. For more details, visit [www.lg.com](http://www.lg.com)

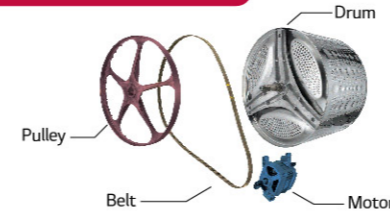


Inverter  
Direct Drive

## LESS VIBRATION. LESS NOISE.

Inverter Direct Drive motor enhances washing performance but with less noise. Inverter Direct Drive technology uses fewer moving parts, which reduce vibrations and enhance durability. Plus, the motors dissipate less energy, reducing electricity consumption.

### CONVENTIONAL MOTOR

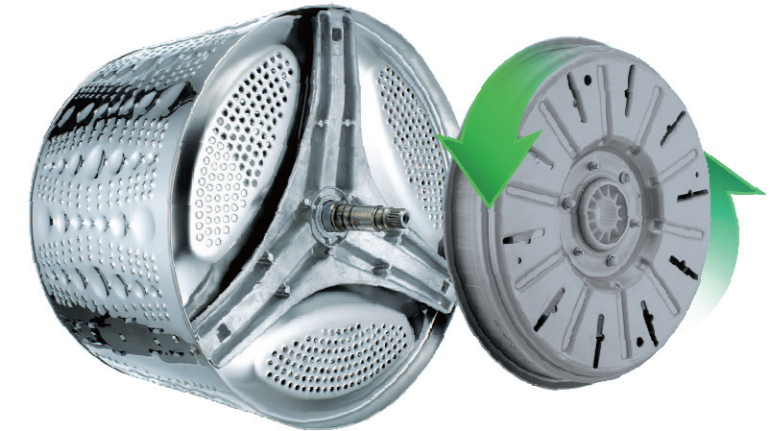


More friction caused by the pulley and belt causes more noise & vibration which lead to less durability.

### LG INVERTER DIRECT DRIVE



The drum and motor are connected directly which leads to less noise & vibration and, more durability.



MOTION **DD** Direct Drive

## WASH WITH COMPLETE CARE

The unique motions of 6 Motion Direct Drive are designed ingeniously to deliver better wash performance to each fabric.

### TUMBLING



A standard motion in all washing machines, tumbling works for all types of clothes.

### SCRUBBING



As an intensive wash cycle, scrubbing dissolves detergent quickly and works strongly on tough stains.

### FILTRATION



While filtration soaks bulky laundry faster and thoroughly, it is made for a big wash.

### ROLLING



We call it the Silent Wash and it's not just effective but kinder too. Because it rolls the laundry below the water level and causes no damage to the clothes.

### STEPPING



No more wrinkles on your shirts. Stepping is just like wrinkle care that prevents creases and causes no damage to the fabrics.

### SWING



Designed for delicate clothes, the swing motion ensures smooth drum action which prevents fabric damage and creasing.

Images/products shown are for illustration purposes only. Actual product may vary due to product enhancement. Features may vary from model to model. All third party logos, trademark and other Intellectual Properties are property of respective brands and LG doesn't hold any rights pursuant to same. For more details, visit [www.lg.com](http://www.lg.com)

# ALLERGEN REMOVAL

Steam+ Technology activates Allergy Care\* that removes allergens.



Without Steam\*      With Steam\*



**Steam+**  
Allergen + **Wrinkle Free\***

- Removes 99.9%\* Allergens
- Reduces 30%\* wrinkles



Images/products shown are for illustration purposes only. Actual product may vary due to product enhancement. Features may vary from model to model. All third party logos, trademark and other Intellectual Properties are property of respective brands and LG doesn't hold any rights pursuant to same. \*Tested by 3<sup>rd</sup> Party under standard conditions. The results may be different depending on the clothes and environment. Allergy Care cycle approved by BAF (British Allergy Foundation) for reduction in exposure to house dust mite allergen, cat allergen, dog allergen, pollen allergen, fungi, and bacteria. Cotton cycle with 'Wrinkle Care' option (3 mixed shirts) compared to Cotton cycle without option. The results may be different depending on the clothes and environment. Wrinkle Care is available as an option in 6 cycles. For more details, visit [www.lg.com](http://www.lg.com)

## TurboWash 360°

**THOROUGHLY CLEANS IN 39 MINUTES\***

With TurboWash 360° your laundry can be thoroughly done in just 39 minutes\* with more fabric protection. 4 directions of 3D multi-nozzles reach every inch of your laundry to add to the wash performance.



**36%\* Less Laundry Time**

Enhances the wash results with reduced laundry time.



**28%\* More Energy Efficiency**

Performs better to add to your savings.



**16%\* Less Clothes Damage**

Washes clothes better and keeps them new for longer.



Images/products shown are for illustration purposes only. Actual product may vary due to product enhancement. Features may vary from model to model. All third party logos, trademark and other Intellectual Properties are property of respective brands and LG doesn't hold any rights pursuant to same. \*Tested by Intertek, based on IEC 60456 : edition 5.0. TurboWash39 cycle with 5kg of IEC load compared to Conventional Cotton Cycle with TurboWash (F4V9RWP2W vs. FC1450S2W). The results may be different depending on the environment. For more details, visit [www.lg.com](http://www.lg.com)



## BIGGER DRUM Bigger Capacity in the same space

LG's new Bigger Drum is designed to cater to the Indian need of washing big loads at once. So, no matter if it's an entire load of a joint family or a compiled load of a nuclear one, it allows you to wash them at the same time and enhances your washing experience.

## More Height leads to a Better Wash

The Tumble Wash motion drops clothes from a higher elevation, making the dirt lose its grip, to give a superior wash.



Step 1



Step 2



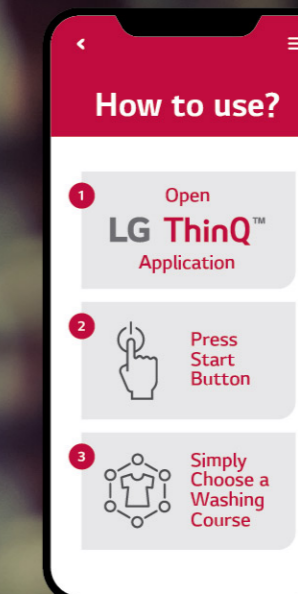
Step 3

Images/products shown are for illustration purposes only. Actual product may vary due to product enhancement. Features may vary from model to model. All third party logos, trademark and other Intellectual Properties are property of respective brands and LG doesn't hold any rights pursuant to same. For more details, visit [www.lg.com](http://www.lg.com)

# BE AT HOME, WITHOUT BEING AT HOME

powered by **ThinQ\*** (Works on Wi-Fi)

Control & monitor your washer anytime,  
from anywhere with just One App (Wi-Fi only)



**Remote Control & Monitor**  
Monitors and controls your smart Washing Machine from anywhere.



**Push Alerts**  
Notifies when a cycle is completed, or an error occurs on the Washing Machine.



**Smart Diagnosis**  
Allows you to troubleshoot the Washing Machine.



**Tub Clean Coach**  
Alarms when it is time to clean the tub.



**Download Cycle**  
Downloads new cycles to the Washing Machine.



**Energy Monitoring**  
Checks energy usage for recent cycles and the month.

Images/products shown are for illustration purposes only. Actual product may vary due to product enhancement. Features may vary from model to model. All third party logos, trademark and other Intellectual Properties are property of respective brands and LG doesn't hold any rights pursuant to same. \*Interface of app may differ depending upon operating system and mobile configuration. For more details, visit [www.lg.com](http://www.lg.com)

**FULLY STAINLESS STEEL DRUM**  
More Hygiene. More Durability.

Built to bring convenience and durability, this Stainless Steel Drum makes your washing machine last longer. Not just this, its Stainless Steel Lifters keep the insides of the washing machine hygienic.



**Conventional Plastic Lifters**  
Contaminates the clothes with bacteria.



**LG Stainless Steel Lifters**  
No contamination. Only hygiene.

Images/products shown are for illustration purposes only. Actual product may vary due to product enhancement. Features may vary from model to model. All third party logos, trademark and other Intellectual Properties are property of respective brands and LG doesn't hold any rights pursuant to same. For more details, visit [www.lg.com](http://www.lg.com)

# WASHER DRYER



**FHD2112STB 21 kg / 12 kg**

- Inverter Direct Drive
- Steam™
- 6 Motion DD
- TurboWash™
- LG ThinQ™
- Smart Diagnosis
- 10-Year Warranty\*
- RPM: Max. 1400
- Color: Black VCM



**FHD1508STB 15 kg / 8 kg**

- AI Direct Drive™
- Steam™
- 6 Motion DD
- TurboWash™
- LG ThinQ™
- Smart Diagnosis
- 10-Year Warranty\*
- RPM: Max. 1400
- Color: Black VCM



**FHD1057STB 10.5 kg / 7 kg**

- AI Direct Drive™
- Steam+
- 6 Motion DD
- TurboWash 360°
- LG ThinQ™
- Smart Diagnosis
- 10-Year Warranty\*
- RPM: Max. 1400
- Color: Black VCM



Images/products shown are for illustration purposes only. Actual product may vary due to product enhancement. Features may vary from model to model. All third party logos, trademark and other Intellectual Properties are property of respective brands and LG doesn't hold any rights pursuant to same. \*10-Year Warranty on motor only. For more details, visit [www.lg.com](http://www.lg.com)

# FRONT LOAD WASHING MACHINES



**FHP1411Z9B 11 kg**

- AI Direct Drive™
- Steam+
- 6 Motion DD
- TurboWash 360°
- LG ThinQ™
- Wrinkle Care
- 10-Year Warranty\*
- RPM: Max. 1400
- Color: Black VCM



**FHP1411Z9P 11 kg**

- AI Direct Drive™
- Steam+
- 6 Motion DD
- TurboWash 360°
- LG ThinQ™
- Wrinkle Care
- 10-Year Warranty\*
- RPM: Max. 1400
- Color: Platinum



**FHP1208Z5M 8 kg**

- AI Direct Drive™
- Steam™
- 6 Motion DD
- LG ThinQ™
- 10-Year Warranty\*
- RPM: Max. 1200
- Color: Middle Black



**FHP1208Z3W 8 kg**

- AI Direct Drive™
- Steam™
- 6 Motion DD
- 10-Year Warranty\*
- RPM: Max. 1200
- Color: White



**FHV1207Z4M 7 kg**

- AI Direct Drive™
- Steam™
- 6 Motion DD
- LG ThinQ™
- 10-Year Warranty\*
- RPM: Max. 1200
- Color: Middle Black



**FHP1410Z7B 10 kg**

- AI Direct Drive™
- Steam+
- 6 Motion DD
- TurboWash™
- LG ThinQ™
- 10-Year Warranty\*
- RPM: Max. 1400
- Color: Black VCM



**FHP1410Z7P 10 kg**

- AI Direct Drive™
- Steam+
- 6 Motion DD
- TurboWash™
- LG ThinQ™
- 10-Year Warranty\*
- RPM: Max. 1400
- Color: Platinum



**FHV1409Z2M 9 kg**

- AI Direct Drive™
- Steam™
- 6 Motion DD
- LG ThinQ™
- 10-Year Warranty\*
- RPM: Max. 1400
- Color: Middle Black



**FHV1207Z2W 7 kg**

- AI Direct Drive™
- Steam™
- 6 Motion DD
- 10-Year Warranty\*
- RPM: Max. 1200
- Color: White



**FHV1265Z2M 6.5 kg**

- AI Direct Drive™
- Steam™
- 6 Motion DD
- Smart Diagnosis
- 10-Year Warranty\*
- RPM: Max. 1200
- Color: Middle Black



**FHV1265Z2W 6.5 kg**

- AI Direct Drive™
- Steam™
- 6 Motion DD
- 10-Year Warranty\*
- RPM: Max. 1200
- Color: White



**FHV1409Z4M 9 kg**

- AI Direct Drive™
- Steam™
- 6 Motion DD
- LG ThinQ™
- 10-Year Warranty\*
- RPM: Max. 1400
- Color: Middle Black



**FHP1208Z9B 8 kg**

- AI Direct Drive™
- Steam+
- 6 Motion DD
- TurboWash 360°
- LG ThinQ™
- 10-Year Warranty\*
- RPM: Max. 1200
- Color: Black VCM



**FHV1408Z2M 8 kg**

- AI Direct Drive™
- Steam™
- 6 Motion DD
- Smart Diagnosis
- 10-Year Warranty\*
- RPM: Max. 1400
- Color: Middle Black



**FHV1265ZFW 6.5 kg**

- AI Direct Drive™
- Steam™
- 6 Motion DD
- LG ThinQ™
- 10-Year Warranty\*
- RPM: Max. 1200
- Color: White



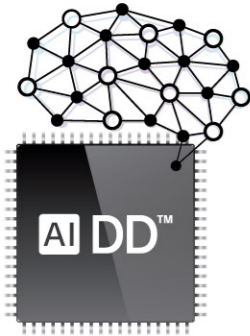
Images/products shown are for illustration purposes only. Actual product may vary due to product enhancement. Features may vary from model to model. All third party logos, trademark and other Intellectual Properties are property of respective brands and LG doesn't hold any rights pursuant to same. \*10-Year Warranty on motor only. For more details, visit [www.lg.com](http://www.lg.com)

Images/products shown are for illustration purposes only. Actual product may vary due to product enhancement. Features may vary from model to model. All third party logos, trademark and other Intellectual Properties are property of respective brands and LG doesn't hold any rights pursuant to same. \*10-Year Warranty on motor only. For more details, visit [www.lg.com](http://www.lg.com)





Presenting the new range of  
**LG TOP LOAD  
WASHING  
MACHINE WITH  
AI DIRECT DRIVE™**  
Go Easy Go Intelligent!

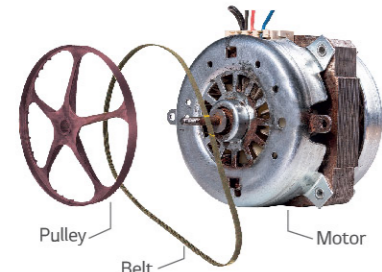


# LG AI DD™

LG's AI Direct Drive technology automatically selects the optimal wash cycle from over 20,000 pre-loaded wash patterns. So, now you can get more fabric protection with just a push of a button.

## INVERTER DIRECT DRIVE MOTOR Less Vibration. Less Noise. More Durability.

The LG Direct Drive Motor with Inverter Technology is a reliable, quiet, and durable mechanism in which fewer parts move, unlike the traditional belt and pulley system.



Conventional Motor Belt and Pulley System



LG Direct Drive Motor No Belt No Pulley



## MOTION DD Direct Drive Better Wash Performance. Cleaner Clothes.



Agitating



Rotating



Swing



Rubbing



Compressing



Power Motion

## MORE FABRIC CARE



## AUTOMATICALLY DETECTS FABRIC LOAD AND SOFTNESS



## MORE CONVENIENCE



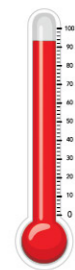
Images/products shown are for illustration purposes only. Actual product may vary due to product enhancement. Features may vary from model to model. All third party logos, trademark and other Intellectual Properties are property of respective brands and LG doesn't hold any rights pursuant to same. For more details, visit [www.lg.com](http://www.lg.com)

Images/products shown are for illustration purposes only. Actual product may vary due to product enhancement. Features may vary from model to model. All third party logos, trademark and other Intellectual Properties are property of respective brands and LG doesn't hold any rights pursuant to same. For more details, visit [www.lg.com](http://www.lg.com)

## Steam™ IN-BUILT HEATER

### Steam Wash for Allergy Removal

Now say goodbye to House Dust Mite and Allergen with LG Top Load Washing Machine's In-built Heater. Located beneath the inner tub, this heater raises the water temperature up to 60°C, resulting in more hygienic clothes.



Images/products shown are for illustration purposes only. Actual product may vary due to product enhancement. Features may vary from model to model. All third party logos, trademark and other Intellectual Properties are property of respective brands and LG doesn't hold any rights pursuant to same. \*Tested by 3rd Party under standard conditions. The results may be different depending on the clothes and environment. Allergy Care cycle approved by BAF (British Allergy Foundation) for reduction in exposure to house dust mite allergen, cat allergen, dog allergen, pollen allergen, fungi, and bacteria. For more details, visit [www.lg.com](http://www.lg.com)



### LG ThinQ™ Operate Laundry Remotely

- Our LG ThinQ™ feature lets you control the LG Washing Machine from anywhere.
- You can download additional wash programs depending on the fabrics and stains.



### SOFT CLOSING DOOR Safe & Convenient

Unlike other washing machine doors, LG's Top Load Washing Machine comes with a soft closing door that is safe, convenient.



LG v/s Conventional

### NEW WIDE FILTER Better Lint Collection

LG Top Load Washing Machines come with a new wide filter design that increases the lint collection rate.



### STAINLESS STEEL PULSATOR Built To Bring More Durability

While the Stainless Steel Pulsator stays rust-free, it keeps you worry-free by providing hygienic clothes. What's more! Built tough, it comes with a long life too.

Images/products shown are for illustration purposes only. Actual product may vary due to product enhancement. Features may vary from model to model. All third party logos, trademark and other Intellectual Properties are property of respective brands and LG doesn't hold any rights pursuant to same. For more details, visit [www.lg.com](http://www.lg.com)

## BIGGER DRUM

### Bigger Capacity in the same space

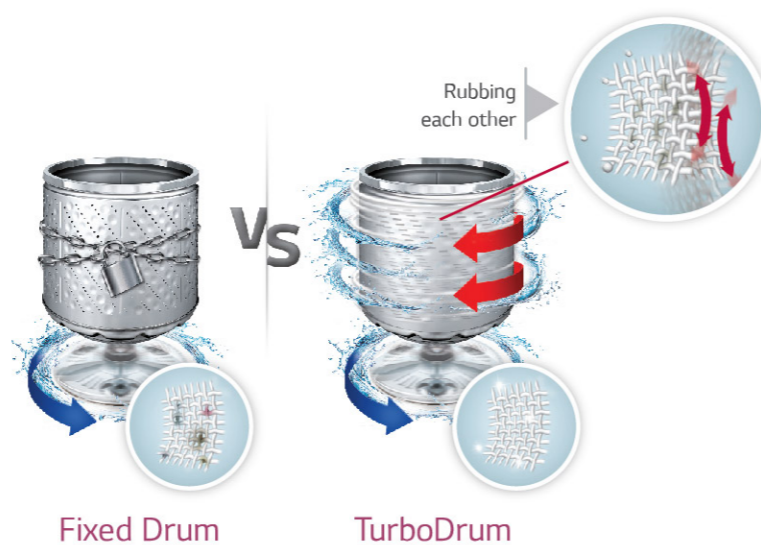
Do more laundry in one load with less vibration, more spin speed and smooth operation.



## TurboDrum

### Better Wash Performance

TurboDrum enables the most powerful wash and removes the toughest dirt through a strong water stream generated by rotating drum and pulsator in the opposite direction.



Images/products shown are for illustration purposes only. Actual product may vary due to product enhancement. Features may vary from model to model. All third party logos, trademark and other Intellectual Properties are property of respective brands and LG doesn't hold any rights pursuant to same. \*Comparing with those of LG conventional front loader with 550mm width products. For more details, visit [www.lg.com](http://www.lg.com)

## AI DIRECT DRIVE™ TOP LOAD WASHING MACHINES



THD09SWP 9 kg

- AI Direct Drive™
- Direct Drive Motor
- Steam™
- In-Built Heater
- 6 Motion DD
- TurboWash™
- LG ThinQ™
- Smart Diagnosis
- Soft Closing Door
- Color: Platinum Black

AI DD™ Steam™  
TurboWash™ LG ThinQ™



THD09NWF 9 kg

- AI Direct Drive™
- 6 Motion DD
- TurboWash™
- LG ThinQ™
- Soft Closing Door
- Color: MFS

AI DD™ TurboWash™  
LG ThinQ™



THD10SWP 10 kg

- AI Direct Drive™
- Direct Drive Motor
- Steam™
- In-Built Heater
- 6 Motion DD
- TurboWash™
- LG ThinQ™
- Smart Diagnosis
- Soft Closing Door
- Color: Platinum Black

AI DD™ Steam™  
TurboWash™ LG ThinQ™



THD09NWM 9 kg

- AI Direct Drive™
- 6 Motion DD
- TurboWash™
- LG ThinQ™
- Soft Closing Door
- Color: Middle Black

AI DD™ TurboWash™  
LG ThinQ™



THD09NPF 9 kg

- AI Direct Drive™
- 6 Motion DD
- Smart Diagnosis
- TurboDrum
- Soft Closing Door
- Color: MFS

AI DD™



THD10NWM 10 kg

- AI Direct Drive™
- 6 Motion DD
- TurboWash™
- LG ThinQ™
- Soft Closing Door
- Color: Middle Black

AI DD™ TurboWash™  
LG ThinQ™



THD09SWM 9 kg

- AI Direct Drive™
- Steam™
- In-Built Heater
- 6 Motion DD
- TurboWash™
- LG ThinQ™
- Soft Closing Door
- Color: Middle Black

AI DD™ Steam™  
TurboWash™ LG ThinQ™



THD08SWM 8 kg

- AI Direct Drive™
- Steam™
- In-Built Heater
- 6 Motion DD
- TurboWash™
- LG ThinQ™
- Soft Closing Door
- Color: Middle Black

AI DD™ Steam™  
TurboWash™ LG ThinQ™

Images/products shown are for illustration purposes only. Actual product may vary due to product enhancement. Features may vary from model to model. All third party logos, trademark and other Intellectual Properties are property of respective brands and LG doesn't hold any rights pursuant to same. For more details, visit [www.lg.com](http://www.lg.com)



**GOOD FOR  
CLOTHES.  
HARSH ON  
STAINS.**

Smart Inverter Range

## SMART INVERTER. SMART CHOICE.

LG Washing Machine comes with Smart Inverter Technology that is designed to multiply your delights with



**36%\***  
Energy Saving

Uses less energy without impacting the performance



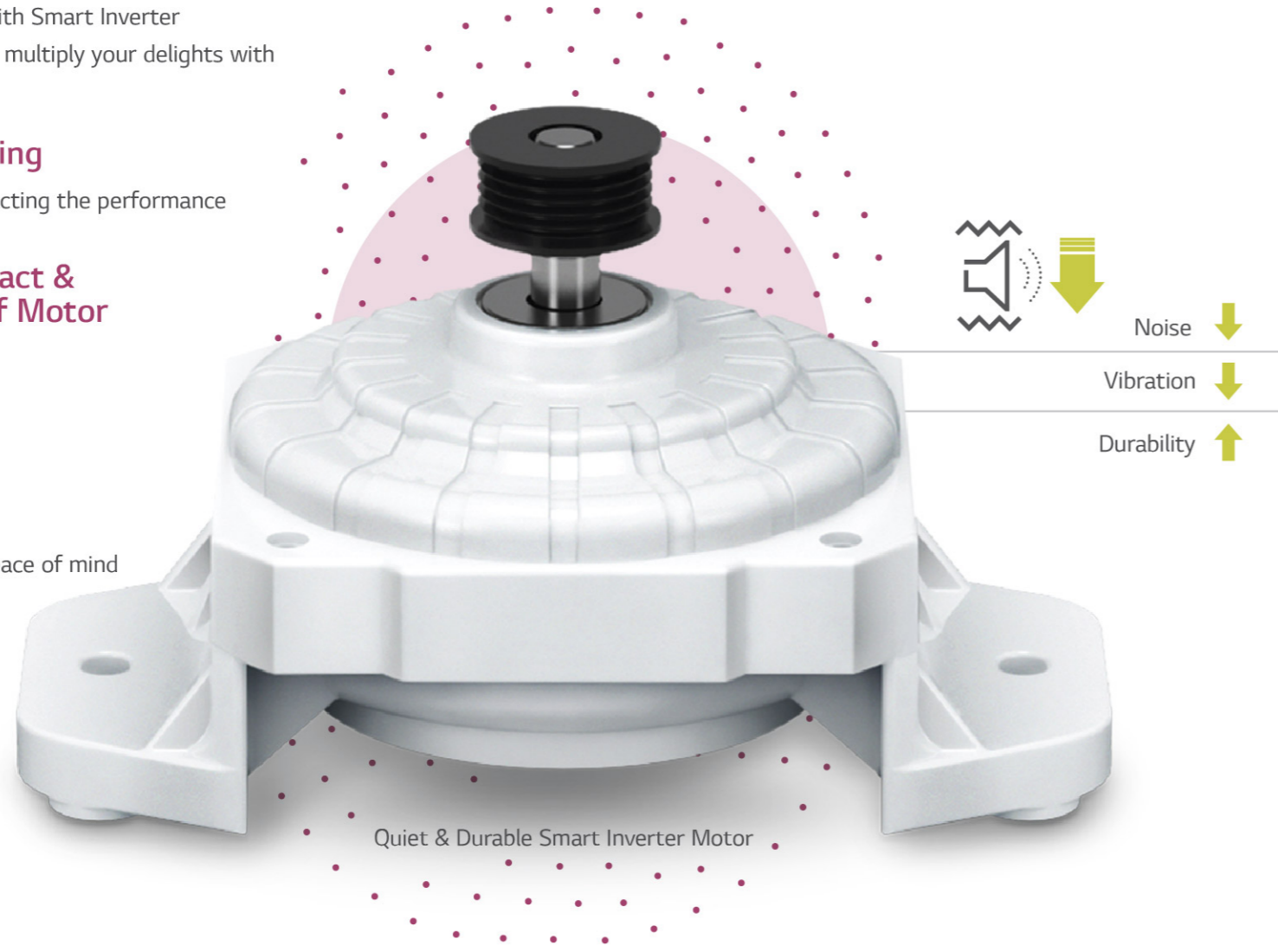
**New Compact & Waterproof Motor**

Built to serve durability



**10-year warranty\***

Provides you with complete peace of mind



Quiet & Durable Smart Inverter Motor

## A FULLY-AUTOMATIC WASHING MACHINE FOR A PERFECT WASH

The revolutionary in-built Jet Spray+, with its powerful water spray, washes off dirt and excess detergent, giving you the best possible wash.

### Jet Spray+

**No Rubbing. No Scrubbing.**

Key Benefits: \_\_\_\_\_



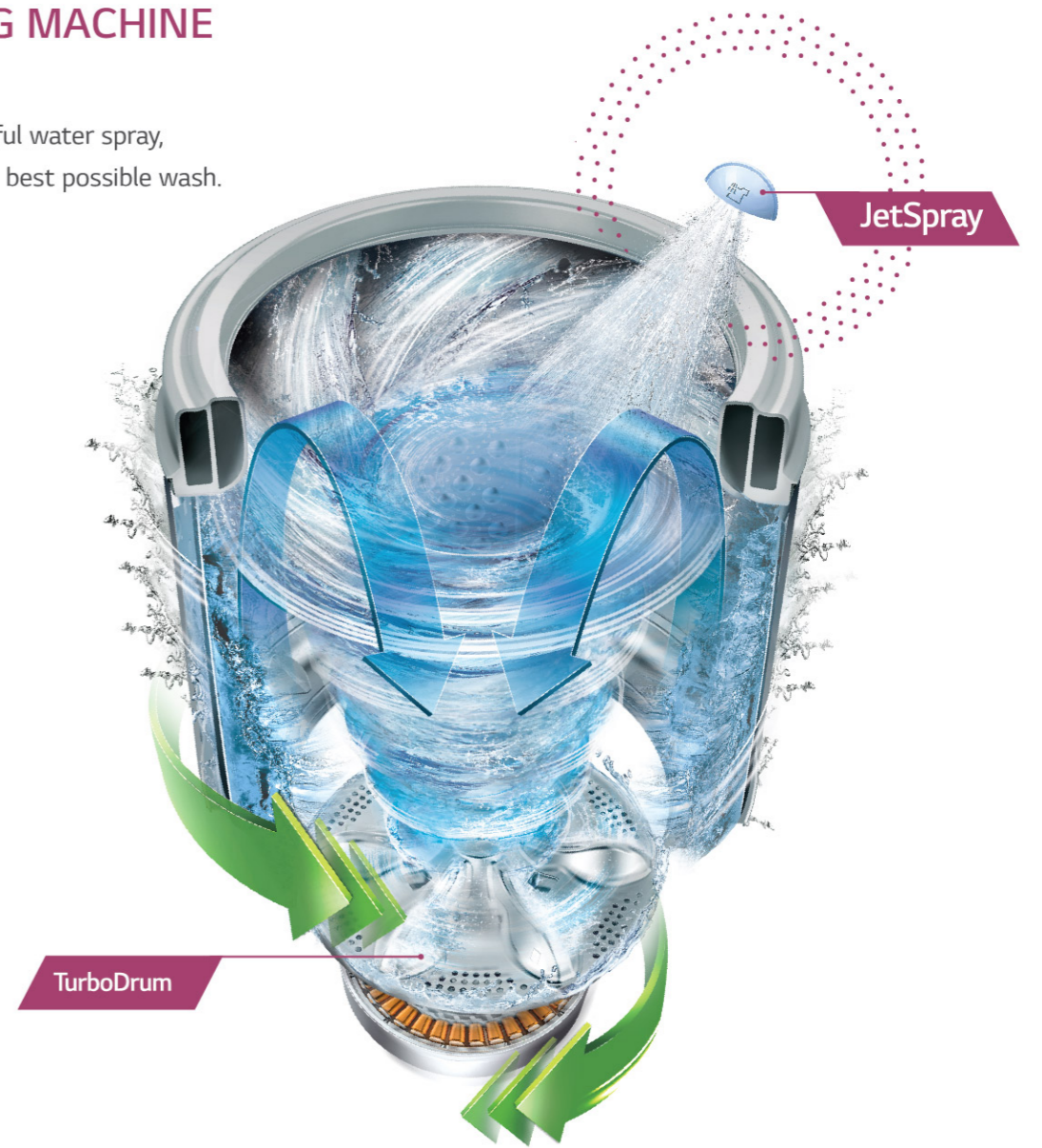
**SAVE 70L\*  
WATER**  
per wash cycle



**SAVE 40%\*  
ENERGY**  
with less cycle time



Wash cycle  
**LESS THAN  
39\* MINS**



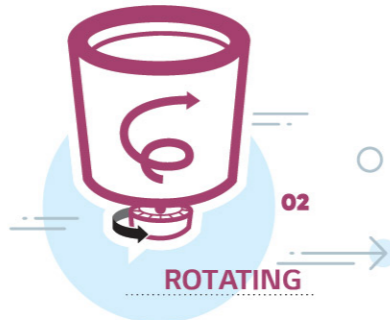
### 3 SMART MOTIONS

3 kinds of tub movements, controlled by Smart Inverter, provide enhanced washing performance along with better care of clothes.



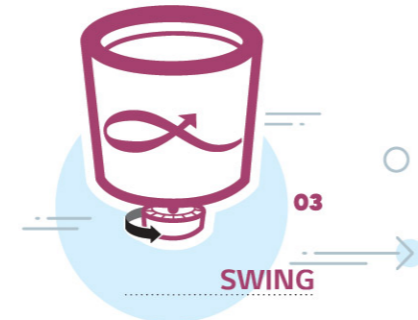
#### Powerful Washing

Removes heavy stains by creating a powerful water stream.



#### Tangle-Free

Untangles clothes at the end of the washing and rinsing cycle by shortly changing spin direction.



#### Delicate Wash

Minimizes fabric damage by moving clothes gently, especially delicate clothes.

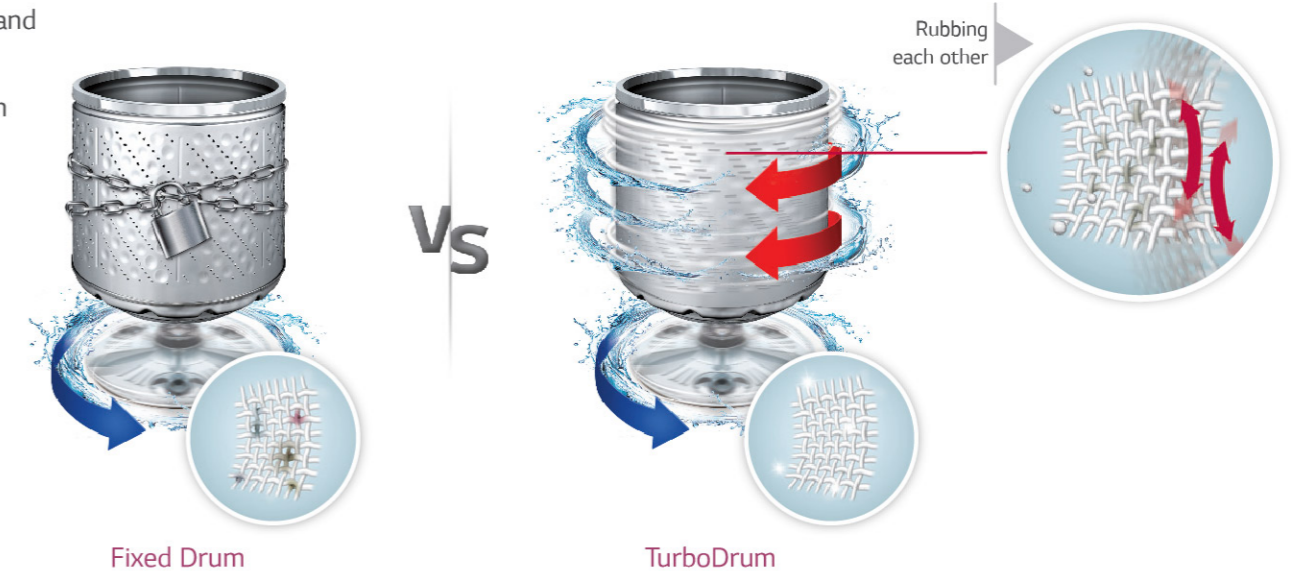
### Punch+ 3

Punch+ 3 creates water streams in the vertical direction which mix laundry up and down repeatedly for an even washing result.



### TurboDrum Better Wash Performance

TurboDrum enables the most powerful wash and removes the toughest dirt through a strong water stream of rotating drum and pulsator in the opposite direction.



### SOFT CLOSING & WIDE DIAMOND GLASS DOOR



Safe, convenient, and noise-reducing.



Shock-resistant, anti-scratch, and wide view.

# TOP LOAD WASHING MACHINES



**THD18STB/  
THD12STB 18 kg/12 kg**

- Direct Drive Motor
- Steam™
- In-Built Heater
- 6 Motion DD
- TurboWash™ 3D
- LG ThinQ™ • JetSpray+
- Smart Diagnosis
- Soft Closing Door
- Color: Black (STS)



**THD11STM 11 kg**

- Direct Drive Motor
- Steam™
- In-Built Heater
- 6 Motion DD
- TurboWash™ 3D
- LG ThinQ™
- JetSpray+
- Soft Closing Door
- Color: Middle Black



**T75SJDR1Z 7.5 kg**

- Smart Inverter Motor
- JetSpray+
- Smart Diagnosis
- 3 Smart Motions
- Soft Closing Door
- Color: Dark Red



**T75SPSF1Z 7.5 kg**

- Smart Inverter Motor
- Smart Diagnosis
- 3 Smart Motions
- Soft Closing Door
- Color: MFS



**T70SJSF3Z 7 kg**

- Smart Inverter Motor
- JetSpray+
- Smart Diagnosis
- 3 Smart Motions
- Soft Closing Door
- Color: MFS



**T10SJMB1Z 10 kg**

- Smart Inverter Motor
- JetSpray+
- Smart Diagnosis
- 3 Smart Motions
- Soft Closing Door
- Color: Middle Black



**T80SJSF1Z 8 kg**

- Smart Inverter Motor
- JetSpray+
- Smart Diagnosis
- 3 Smart Motion
- Digital Display
- Soft Closing Door
- Color: MFS



**T90SJMB1Z/T80SJMB1Z/  
T70SJMB1Z 9/8/7 kg**

- Smart Inverter Motor
- JetSpray+
- Smart Diagnosis
- 3 Smart Motions
- Soft Closing Door
- Color: Middle Black



**T70SJSF2ZA 7 kg**

- Smart Inverter Motor
- JetSpray+
- Smart Diagnosis
- 3 Smart Motions
- Soft Closing Door
- Color: MFS



**T70SNSF3Z 7 kg**

- Smart Inverter Motor
- Smart Diagnosis
- 3 Smart Motions
- Soft Closing Door
- Color: MFS



**T70SPSF1ZA/  
T65SPSF1ZA 7/6.5 kg**

- Smart Inverter Motor
- Smart Diagnosis
- 3 Smart Motions
- Soft Closing Door
- Color: MFS



**T80SPSF2Z 8 kg**

- Smart Inverter Motor
- Smart Diagnosis
- 3 Smart Motions
- Soft Closing Door
- Color: MFS



**T80SJRG1Z 8 kg**

- Smart Inverter Motor
- JetSpray+
- Smart Diagnosis
- 3 Smart Motions
- Soft Closing Door
- Color: Ebony Regal



**T80SKSF1Z/T75SKSF1Z 8/7.5 kg**

- Smart Inverter Motor
- Smart Diagnosis
- 3 Smart Motions
- Color: MFS Body



**T65SJSF3Z 6.5 kg**

- Smart Inverter Motor
- JetSpray+
- Smart Diagnosis
- 3 Smart Motions
- Soft Closing Door
- Color: MFS



**T65SKSF4Z 6.5 kg**

- Smart Inverter Motor
- Smart Diagnosis
- 3 Smart Motions
- Color: MFS Body



Images/products shown are for illustration purposes only. Actual product may vary due to product enhancement. Features may vary from model to model. All third party logos, trademark and other Intellectual Properties are property of respective brands and LG doesn't hold any rights pursuant to same. For more details, visit [www.lg.com](http://www.lg.com)

Images/products shown are for illustration purposes only. Actual product may vary due to product enhancement. Features may vary from model to model. All third party logos, trademark and other Intellectual Properties are property of respective brands and LG doesn't hold any rights pursuant to same. For more details, visit [www.lg.com](http://www.lg.com)





LG SEMI-AUTOMATIC  
WASHING MACHINE

**STAIN-FREE  
CLOTHES.  
STRESS-FREE  
YOU.**



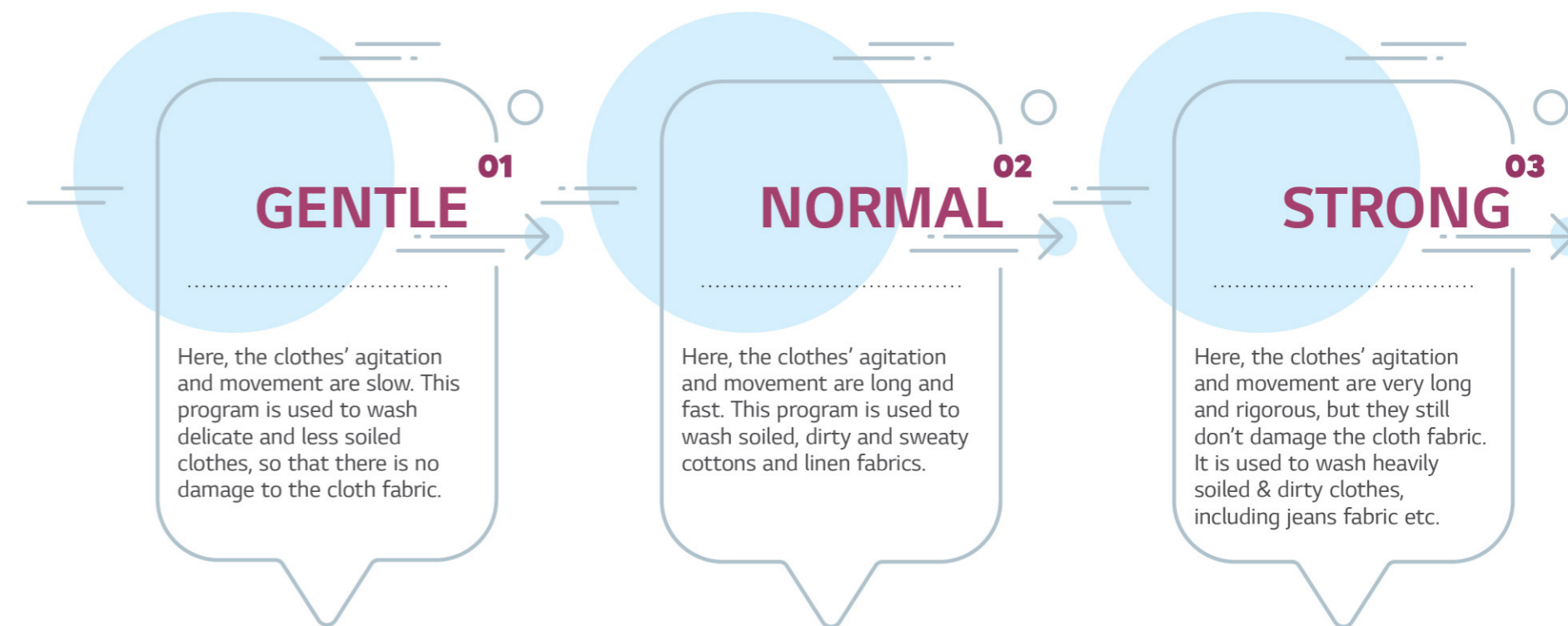
## ROLLER JET PULSATOR

Roller Jet Pulsator rotates the clothes effectively & washes out every stain from the clothes, giving you the best washing performance while being gentle on the clothes. The roller case creates friction to effectively remove dust and mites. This technology propels detergent-rich water into every thread of the fabric. It also scrubs your clothes effectively, resulting in a better-quality wash.

Images/products shown are for illustration purposes only. Actual product may vary due to product enhancement. Features may vary from model to model. All third party logos, trademark and other Intellectual Properties are property of respective brands and LG doesn't hold any rights pursuant to same. For more details, visit [www.lg.com](http://www.lg.com)

## 3 WASH PROGRAMS

The 3 Wash Programs add delight to your washing experience. With gentle, normal and strong wash programs, the machine caters to a diverse range of washing with utmost ease.



Images/products shown are for illustration purposes only. Actual product may vary due to product enhancement. Features may vary from model to model. All third party logos, trademark and other Intellectual Properties are property of respective brands and LG doesn't hold any rights pursuant to same. For more details, visit [www.lg.com](http://www.lg.com)

## MAGIC FILTER

LG Magic Filter is here to provide you relief from the worry of lint and thread sticking to your clothes by separating the extra lint. So, with LG Magic Filter, get clean and lint-free clothes every time.



## STAR WASHING MACHINES



LG Washing Machines qualify the norms of the Bureau of Energy Efficiency of India with 5-Star Ratings (Labels). Created with the best technology, our wide range of Washing Machines not only saves water and electricity but also provides the best washing quality.

Images/products shown are for illustration purposes only. Actual product may vary due to product enhancement. Features may vary from model to model. All third party logos, trademark and other Intellectual Properties are property of respective brands and LG doesn't hold any rights pursuant to same. For more details, visit [www.lg.com](http://www.lg.com)

## RAT AWAY TECHNOLOGY

### Better Protection. Enhanced Durability.

The Rat Away Technology comes with a 3 mm strong plastic cover with a rat-repellent chemical that helps in keeping rats away from your machine. Now don't worry about rats damaging your washing machine by cutting internal wires which in turn affects its durability & performance.



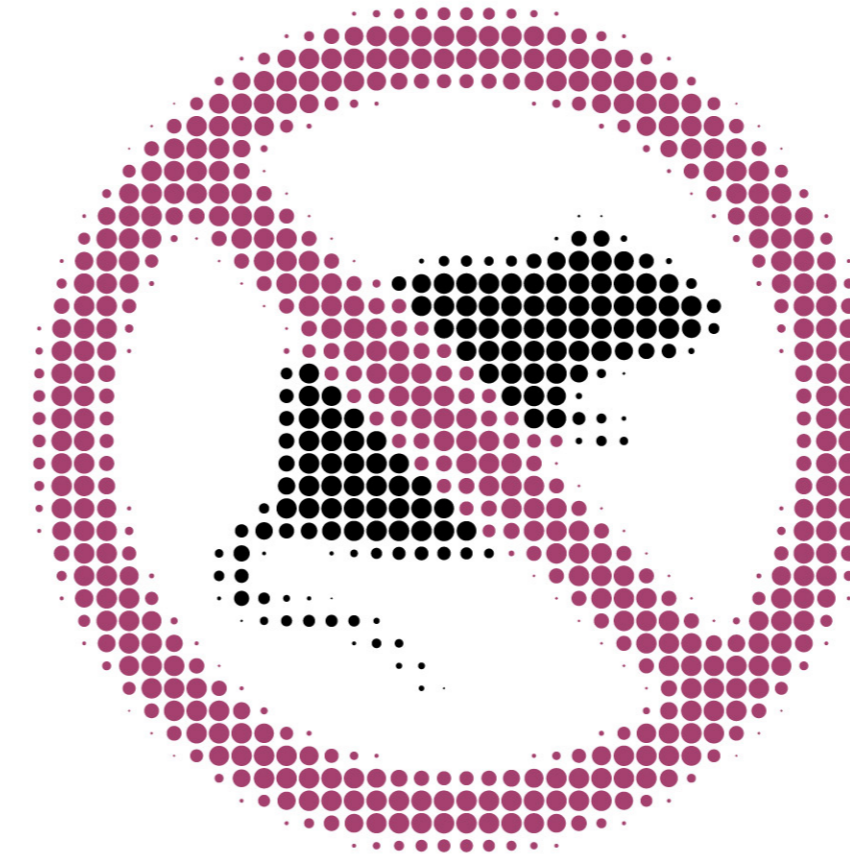
Less damage  
in machine by  
**RAT BITE**



More  
**DURABILITY**  
of machine



Better  
**SAVINGS** with low  
maintenance cost



Images/products shown are for illustration purposes only. Actual product may vary due to product enhancement. Features may vary from model to model. All third party logos, trademark and other Intellectual Properties are property of respective brands and LG doesn't hold any rights pursuant to same. For more details, visit [www.lg.com](http://www.lg.com)

## Additional Features

Introducing additional features like soak, wind jet dry, and magic wheels, we aim at enhancing your washing experiences and providing a better wash.

01

### SOAK

The machine's unique soak process soaks clothes in a concentrated detergent solution to help loosen tough dirt particles.



02

### WIND JET DRY

It removes the remaining moisture from the laundry and inside the washing machine. When the Spin Tub rotates at high RPM, the air flows into the tub and circulates to remove water. This circulation of air through air vents dries the clothes.



03

### MAGIC WHEELS

With 360-degree Magic Wheels, you can swiftly move and rotate your washing machine in any direction with ease and without any help.



## SEMI-AUTOMATIC WASHING MACHINES



P1155SKAZ 11 kg

- Roller Jet Pulsator + Soak
- 5-Year Motor Warranty
- Rat Away
- Buzzer
- Smart Filter
- Air Dry
- Color: Full Body Middle Black/Transparent Lid



P1055SGAZ 10 kg

- Roller Jet Pulsator + Soak
- 5-Year Motor Warranty
- Rat Away
- Buzzer
- Smart Filter
- Air Dry
- Color: Dark Grey/Transparent Lid



P1050SRAZ 10 kg

- Roller Jet Pulsator + Soak
- 5-Year Motor Warranty
- Rat Away
- Buzzer
- Air Dry
- Color: Burgundy/Opaque Lid



P1040RGAZ 10 kg

- Roller Jet Pulsator
- 5-Year Motor Warranty
- Rat Away
- Buzzer
- Color: Dark Grey/Opaque Lid



P9040RGAZ 9 kg

- Roller Jet Pulsator
- 5-Year Motor Warranty
- Rat Away
- Buzzer
- Color: Dark Grey/Opaque Lid



P9041SGAZ 9 kg

- Roller Jet Pulsator + Soak
- 5-Year Motor Warranty
- Rat Away
- Buzzer
- Color: Dark Grey/Opaque Lid



P9041SRAZ 9 kg

- Roller Jet Pulsator + Soak
- 5-Year Motor Warranty
- Rat Away
- Buzzer
- Air Dry
- Color: Burgundy/Opaque Lid



P8535SKMZ 8.5 kg

- Roller Jet Pulsator + Soak
- 5-Year Motor Warranty
- Rat Away
- Magic Wheels
- Dual Magic Filter
- Air Dry
- Color: Middle Black/Transparent Lid





**P8535SPMZ 8.5 kg**

- Roller Jet Pulsator + Soak
- 5-Year Motor Warranty
- Rat Away
- Magic Wheels
- Dual Magic Filter
- Air Dry
- Color: Purple/Transparent Lid



**P8530SRAZ 8.5 kg**

- Roller Jet Pulsator + Soak
- 5-Year Motor Warranty
- Rat Away
- Buzzer
- Air Dry
- Color: Burgundy/Opaque Lid



**P8035SRAZ 8 kg**

- Roller Jet Pulsator + Soak
- 5-Year Motor Warranty
- Rat Away
- Buzzer
- Air Dry
- Color: Burgundy/Transparent Lid



**P7510RGZ 7.5 kg**

- Roller Jet Pulsator
- 5-Year Motor Warranty
- Rat Away
- Buzzer
- Air Dry
- Color: Dark Grey/Opaque Lid



**P7010RRAZ 7 kg**

- Roller Jet Pulsator
- 5-Year Motor Warranty
- Rat Away
- Air Dry
- Color: Burgundy/Opaque Lid



**P7020NGZ 7 kg**

- Normal Jet
- 5-Year Motor Warranty
- Rat Away
- Color: Dark Grey/Opaque Lid



**P8030SRAZ 8 kg**

- Roller Jet Pulsator + Soak
- 5-Year Motor Warranty
- Rat Away
- Buzzer
- Air Dry
- Color: Burgundy/Opaque Lid



**P8015SGZ 8 kg**

- Roller Jet Pulsator + Soak
- 5-Year Motor Warranty
- Rat Away
- Buzzer
- Air Dry
- Color: Dark Grey/Transparent Lid



**P7525SPAZ 7.5 kg**

- Roller Jet Pulsator + Soak
- 5-Year Motor Warranty
- Rat Away
- Buzzer
- Air Dry
- Color: Purple/Transparent Lid



**P7010NBAZ 7 kg**

- Normal Jet
- 5-Year Motor Warranty
- Rat Away
- Color: Dark Blue/Opaque Lid



**P7530RGZ 7.5 kg**

- Roller Jet Pulsator
- 5-Year Motor Warranty
- Rat Away
- Buzzer
- Air Dry
- Color: Dark Grey/Opaque Lid



**P7515SRAZ 7.5 kg**

- Roller Jet Pulsator + Soak
- 5-Year Motor Warranty
- Rat Away
- Buzzer
- Air Dry
- Color: Burgundy/Transparent Lid



**P7510RRAZ 7.5 kg**

- Roller Jet Pulsator
- 5-Year Motor Warranty
- Rat Away
- Buzzer
- Air Dry
- Color: Burgundy/Opaque Lid



# THE NEW LG DRYER

A DELIGHTFUL SURPRISE

Powered by **DUAL**Inverter HeatPump™



## DUAL Inverter Heat Pump™

Dual inverters, along with two compression chambers, help you dry faster and save more energy.

A+++ - **10%** Energy efficiency by  
**DUAL INVERTER HEAT PUMP™**

**DUAL 10** YEAR WARRANTY  
- Inverter Compressor 10Y Warranty  
- Inverter Motor 10Y Warranty

**99.9%\*** Bacteria & house dust mites reduced by  
**ALLERGY CARE**



**LG ThinQ™**



Images/products shown are for illustration purposes only. Actual product may vary due to product enhancement. Features may vary from model to model. All third party logos, trademark and other Intellectual Properties are property of respective brands and LG doesn't hold any rights pursuant to same. \*As tested by third party TUV under controlled lab conditions. Actual results & reductions may vary as per use environment Image simulated & for representation. For more details, visit [www.lg.com](http://www.lg.com)



## HYGIENIC CARE

### Removes 99.9%\* Bacteria & House Dust Mites

Eliminates up to 99.9%\* of allergens and sterilizes bacteria.



### Proven to Reduce Household Dust Mites & Bacteria

Reduces up to 99.9%\* household dust mites and bacteria through allergy care. LG Dryer has been tested with BAF standards and has been proven to reduce high levels of house dust mites & bacteria from laundry.



Images/products shown are for illustration purposes only. Actual product may vary due to product enhancement. Features may vary from model to model. All third party logos, trademark and other Intellectual Properties are property of respective brands and LG doesn't hold any rights pursuant to same. \*As tested by third party TUV under controlled lab conditions. Actual results & reductions may vary as per use environment. For more details, visit [www.lg.com](http://www.lg.com)

## Plug and Play

LG Dryer is a no-fuss machine that can be plugged anywhere and works like a charm. Since water gets collected in its inbuilt chamber tray, no water residue is released from the dryer, making it fit for use in any home space and giving you clean, dry, and hygienic clothes.

## Tower Display Stacking

Our 9 kg LG Dryer goes hand-in-hand with the 9 kg LG Front Load Washing Machine to give you a holistic washing experience and more convenience in washing & drying clothes.



## SMART DRYING

### Sensor Dry



Detects the moisture of the clothes and sets the drying time automatically.

### Reversible Door



Allows you to install the door on either left or right side as per the availability of space.

### LG ThinQ™ with Wi-Fi



Lets you dry anytime, from anywhere, and helps you download up to 16 drying cycles. While it connects the Washer & Dryer with LG ThinQ™, it also sets the dryer's optimal cycle automatically based on the washer's cycle.

Images/products shown are for illustration purposes only. Actual product may vary due to product enhancement. Features may vary from model to model. All third party logos, trademark and other Intellectual Properties are property of respective brands and LG doesn't hold any rights pursuant to same. For more details, visit [www.lg.com](http://www.lg.com)

## DUAL Inverter HeatPump™

### Inverter Compressor

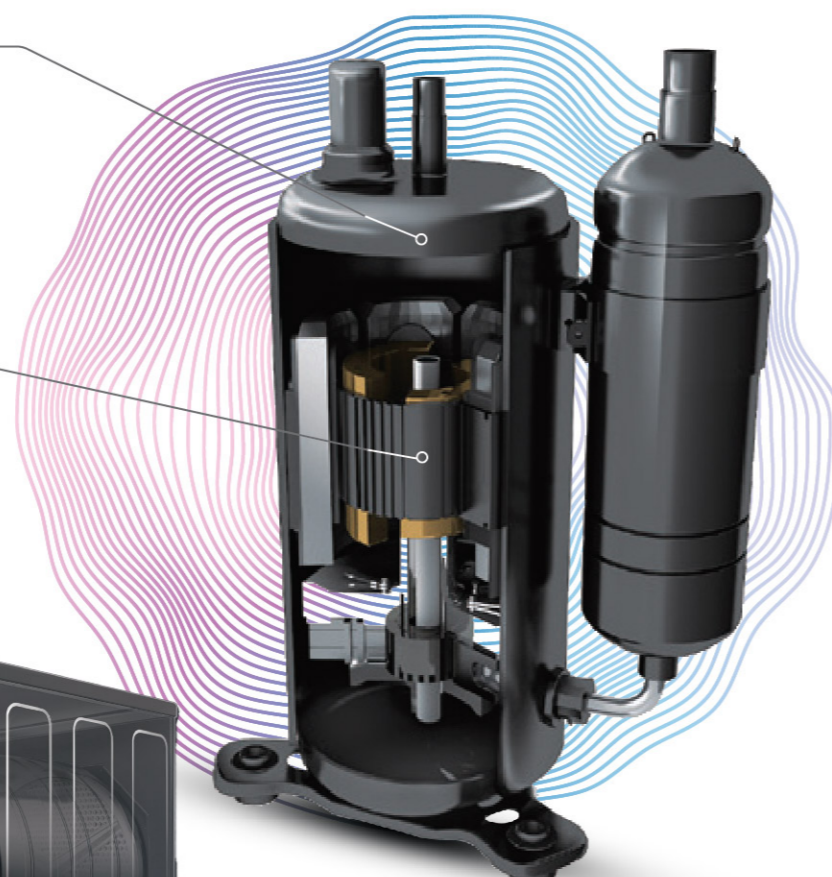
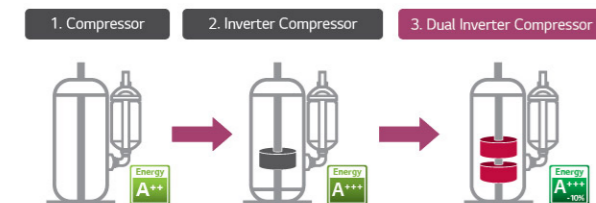
LG EcoHybrid dryer uses a unique BLDC compressor which includes a BLDC motor with a specially designed neodymium magnet. Energy efficiency improvement and drying time are enabled through inverter control technology.

### Compressor Speed Control

Compressor speed control reduces drying time and saves energy.

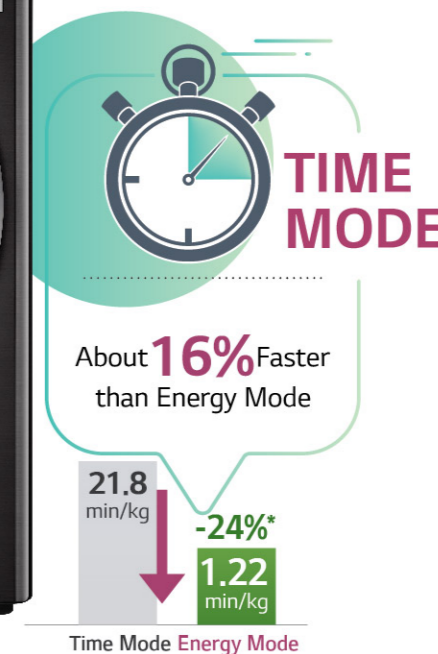
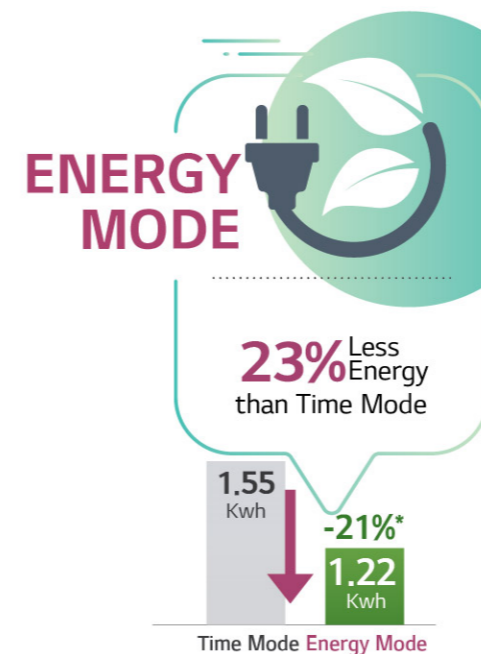
### Dual Inverter Compressor

The most advanced heat pump technology contributes to saving energy.



## Save Energy, Save Time with EcoHybrid

With LG EcoHybrid, select between energy-saving and time-saving.



Durable & Reliable with Dual 10-Year Warranty



Dual Inverter Compressor & Inverter Motor

Gentle Care with Low Temperature Drying



Smoothens crease and reduces shrinkage with Low Temperature.

Images/products shown are for illustration purposes only. Actual product may vary due to product enhancement. Features may vary from model to model. All third party logos, trademark and other Intellectual Properties are property of respective brands and LG doesn't hold any rights pursuant to same. For more details, visit [www.lg.com](http://www.lg.com)

Images/products shown are for illustration purposes only. Actual product may vary due to product enhancement. Features may vary from model to model. All third party logos, trademark and other Intellectual Properties are property of respective brands and LG doesn't hold any rights pursuant to same. \*Tested by Intertek, 9kg of IEC standard load, cotton cycle, comparison between Energy and Time Mode. For more details, visit [www.lg.com](http://www.lg.com)



# SPECIFICATIONS

<b>Model Name</b>	<b>DHVO9SWB</b>
Capacity	9Kg
Color	Black Steel
Door	Tempered Glass+Chrome
Dryer Type	Heat Pump Drying
Drum	Stainless Drum
Programs	14
Technology	Dual Inverter Heat Pump™
Auto Cleaning Condenser	Yes
LG ThinQ™	Yes
Smart Pairing	Yes
EcoHybrid	Yes
Allergy Care	Yes
Download Cycle	Yes
Warranty	2 Year on Product & 10 Year on Compressor
Dimension (WxDxH) mm	600x690x850



Images/products shown are for illustration purposes only. Actual product may vary due to product enhancement. Features may vary from model to model. All third party logos, trademark and other Intellectual Properties are property of respective brands and LG doesn't hold any rights pursuant to same. For more details, visit [www.lg.com](http://www.lg.com)

Notes: \_\_\_\_\_

\_\_\_\_\_

\_\_\_\_\_

\_\_\_\_\_

\_\_\_\_\_

\_\_\_\_\_

\_\_\_\_\_

\_\_\_\_\_

\_\_\_\_\_

\_\_\_\_\_

\_\_\_\_\_

\_\_\_\_\_

\_\_\_\_\_

Notes: \_\_\_\_\_

\_\_\_\_\_

\_\_\_\_\_

\_\_\_\_\_

\_\_\_\_\_

\_\_\_\_\_

\_\_\_\_\_

\_\_\_\_\_

\_\_\_\_\_

\_\_\_\_\_

\_\_\_\_\_

\_\_\_\_\_

\_\_\_\_\_