



RESTAURANT



HOTEL



OFFICE



SCHOOL



RETAIL



SYSTEM
AIR CONDITIONING



LG ROUND CASSETTE

AESTHETIC DESIGN
MEETS MODERN LUXURY.

LG SAC CUSTOMER CARE

1800-180-3575
(Service Toll Free)

www.lg.com/in
cac.service@lgepartner.com

www.facebook.com/LGIndiaCommercialAC

www.twitter.com/LGIndia

To know more about LG, visit www.lg.com/in/business/air-solution
For Corporate/Institutional enquiries,
please write to sac.marketing@lge.com



Regd. Office: LG Electronics India Pvt. Ltd., A-24/6, Mohan Cooperative Industrial Estate, Mathura Road, New Delhi-110044

CIN No. U32107DL1997PTC220109

Please contact us at North: 9717117116, South: 7824805486, East: 7875759665, West: 9923108310

Images shown are for representation purposes only, actual product image may vary as per continuous product enhancement.

Life's Good.

ROUND CASSETTE

OUTDOOR

Comfort

Perfect Round Flow

Perfect round flow without blind spots. (This product can only be installed on an open ceiling)



Visible & Intuitive Airflow

With crystal vane for 6-step precision control, you can send cool / heated air wherever you want.

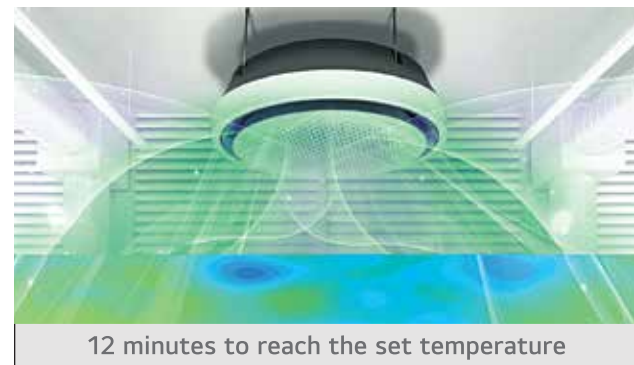
30% Faster in Cooling

With greater airflow, it gets cooler 30% faster, spreading cool air evenly without missing a spot.

LG Round Cassette



LG Round Cassette



FEATURES

SPECIFICATIONS

| Model Name | Unit | ARNU24GTYA4 | ARNU36GTYA4 | ARNU48GTYA4 |
|-------------------------------|------------------|-------------|---------------------|---------------------|
| Cooling Capacity | Rated | | | |
| | kW | 7.1 | 10.6 | 14.1 |
| | Btu/h | 24,200 | 36,200 | 48,100 |
| Heating Capacity Rated | kW | 8 | 11.9 | 15.9 |
| | Btu/h | 27,300 | 40,600 | 54,200 |
| Air Flow Rate (H/M/L) | m³/min | 22/21/19 | 27/24/21 | 32/28/23 |
| | ft³/min | 777/742/671 | 954/848/742 | 1,131/989/813 |
| Dimensions (W x H x D) | Body (Net) | mm | 1,050 x 330 x 1,050 | 1,050 x 330 x 1,050 |
| | Body (Gross) | mm | 1,137 x 395 x 1,132 | 1,137 x 395 x 1,132 |
| Exterior | Color (RAL Code) | | White (9003) | White (9003) |
| Drain Pipe | O.D/I.D | mm | 32/25 | 32/25 |
| Piping Connection | Liquid Side | mm | 9.52 (3/8) | 9.52 (3/8) |
| | Gas Side | mm | 15.88 (5/8) | 15.88 (5/8) |
| Weight | Body (Net) | kg | 30.0 | 30.0 |
| | Body (Gross) | kg | 36.0 | 36.0 |
| Sound Pressure Levels (H/M/L) | | dB(A) | 39/37/34 | 43/39/37 |
| Power Supply | | ∅, V,Hz | 1,220-240, 50 | 1,220-240, 50 |

Note : 1. Due to our policy of innovation some specifications may be changed without notification.
 2. Capacities are net capacities and based on the following conditions. Refer to the Outdoor Unit Specifications for calculating the real capacity.

- Cooling : Indoor Ambient Temp. 27°CDB / 19°CWB, Outdoor Ambient Temp. 35°CDB / 24°CWB
- Heating : Indoor Ambient Temp. 20°CDB / 15°CWB, Outdoor Ambient Temp. 7°CDB / 6°CWB
- Interconnected Pipe is standard length and difference of Elevation (Outdoor ~ Indoor Unit) is Zero.

ROUND CASSETTE



HEAT PUMP 4HP/5HP

1 PHASE / 3 PHASE

| HP | | 4 | 5 |
|--|-------------------------------------|------------------------------|------------------------------|
| Model Name | Combination Unit (1 Phase/ 3 Phase) | ARUN040GSS5/ARUN040LSS5 | ARUN050GSS5/ARUN050LSS5 |
| Capacity | Cooling (Rated) | kW | 12.1 |
| | | kcal/h | 10,400 |
| | Btu/h | 41,300 | |
| | Heated(Rated) | kW | 12.1 |
| kcal/h | | 10,400 | |
| Btu/h | 41,300 | | |
| Exterior | Color | Warm Gray | Warm Gray |
| Heat Exchanger | Type | Black Fin | Black Fin |
| Compressor | Type | LG BLDC Invertor Scroll (R1) | LG BLDC Invertor Scroll (R1) |
| | Number of Compressor | 1 | 1 |
| Fan | Type | Axial Flow Fan | Axial Flow Fan |
| | Air Flow Rate(High) | m³/min | 60 |
| | Discharge | Side/Top | Side |
| Pipe Connection | Gas Pipe | mm | 9.52(3/8) |
| | Liquid Pipe | mm | 15.88(5/8) |
| Operation Range | Cooling | °C(°F) | -5-53 (23-127) |
| | Heating | °C(°F) | -20-18 (-4-64) |
| Dimension (W x H x D) | Net | mmx No. | (950 x 834 x 330) x 1 |
| Net Weight | | kg x No. | 64.7 |
| Sound Pressure Level | Cooling | dB(A) | 50 |
| Communication Cable | | mm² x No. (VCTF-SB) | 1.0-1.5 x 2C |
| | | | 1.0-1.5 x 2C |
| Refrigerant | Refrigerant Name | | R410A |
| | Control | | Electronic Expansion Valve |
| Power Supply (1 Phase/3Phase) | | ∅,V,Hz | 1,220-240,50 / 3,380-415,50 |
| Number of Maximum Connectable Indoor Units | | | 8 |

COOLING ONLY 5HP

1 PHASE

| HP | | 5 | |
|--|----------------------|------------------------------|----------------------------|
| Model Name | Combination Unit | JRUV050GSD5 | |
| Capacity | Cooling (Rated) | kW | 14.5 |
| | | kcal/h | 12,470 |
| | Btu/h | 49,500 | |
| | Heating (Rated) | kW | - |
| kcal/h | | - | |
| Btu/h | - | | |
| Exterior | Color | Warm Gray | |
| Heat Exchanger | Type | Black Fin | |
| Compressor | Type | LG BLDC Inverter Scroll (R1) | |
| | Number of Compressor | 1 | |
| Fan | Type | Axial Flow Fan | |
| | Air Flow Rate(High) | m³/min | 70 |
| | Discharge | Side/ Top | Side |
| Pipe Connections | Liquid pipe | mm | 9.52 (3/8) |
| | Gas Pipe | mm | 15.88 (5/8) |
| Operation Range | Cooling | °C(°F) | 0-50 (32-122) |
| Dimensions (W x H x D) | | mmx No. | (950 x 834 x330) x 1 |
| Net Weight | | kg x No. | 65.5 x 1 |
| Sound Pressure Level | Cooling | dB(A) | 56 |
| Communication Cable | | mm² x No (VCTF-SB) | 1.0-1.5 x 2C |
| | | | 1.0-1.5 x 2C |
| Refrigerant | Refrigerant Name | | R410A |
| | Control | | Electronic Expansion Valve |
| Power Supply | | ∅,V,Hz | 1, 220-240, 50 |
| Number of Maximum connected indoor units | | | 8 |



SPECIFICATIONS

INDOOR